

Regular Article

## Pollen Grain Morphology of Some Selected Species of Asteraceae in South Western Nigeria

Akinnubi Funmilola Mabel, Akinloye Akinwumi Johnson and  
Oladipo Olaniran Temitope

Department of Botany, Obafemi Awolowo University, Ile-Ife, Osun state, Nigeria  
Corresponding author Email : [olufunmilola\\_07@yahoo.co.uk](mailto:olufunmilola_07@yahoo.co.uk)

Pollen morphology and diversity of twelve species of the Asteraceae were collected from different locations within Ile-Ife, South Western Nigeria and acetolysed. The parameters used for the characterization are: diameter of pollen grains, pollen wall thickness, number of pores, thickness between pores, length of spines and number of colpi. The pollen grains of the species studied are spheroidal in shape, in the group *media* and *minuta*, either echinate or spinate, yellow to yellowish brown, polypteroporate, tricolporate, acolpate and polycolporate, spines are short with thin walls and pores are densely situated and the measurements taken showed variations from species to species. The similarities in structure showed interspecies relationships and reasons for them to be in the same family while the interspecific variations in structures substantiate their existence as distinct species.

**Keywords:** pollen grain, diversity, Asteraceae, acetolysed, spheroidal, colpi, interspecific variations.

Asteraceae (Compositae) is a very large cosmopolitan family whose members are highly advanced and is the second largest family in the division Magnoliophyta with 1,100 genera and over 20,000 recognized species (Ming, 1999). The majority of Asteraceae species are herbaceous although an important component of the family consists of shrubs or even trees. Many plants in the family Asteraceae are economically important as weeds, ornamentals, medicinals and green vegetables (Olorode, 1984).

Pollen characteristics have been used considerably in the taxonomy of Angiosperms and they have been used in establishing phylogenetic relationships in the family Asteraceae, (Moore and Webb, 1978).

Pollen grains of fossil and living plants have provided ample information on the floristic and climatic characters of geological formations (Erdtman, 1943). The first successful attempt at using pollen characters in the classification of plants was made by Prasad, (1963). Patel and Datta (1958) and Sowunmi (1973) are some of the workers who have also contributed to the understanding of the morphology of pollen grains and the significance of pollen architecture in tracing phylogeny. Pollen grains of some members of the family Asteraceae have been studied by Perveen (1999), Adedeji (2005) and Mbagwu *et al.*, (2009). All of them reported pollen grains of the Asteraceae to be spheroidal, echinate or spinate provided with circular

apertures. The aim of this study is to provide additional characters such as pollen morphology and diversity, structural details of the wall.

### Materials and Methods

Pollen grains from fresh anthers of *Ageratum conyzoides* Linn., *Aspilia africana* (Pers) C.D Adams, *Bidens pilosa* Linn., *Chromolaena odorata* (Linn.) King & Robinson, *Crassocephalum crepidioides* Benth S. Moore, *Emilia praetermissa* Milne-Redhead, *Launaea taraxacifolia* Willd., *Synedrella nodiflora* Gaertn., *Tithonia diversifolia* (Hemsl) A. Gray, *Tridax procumbens* Linn., *Vernonia amygdalina* Del. Cent, and *Vernonia cinerea* Linn. were collected for the purpose of studying the morphology of the pollen grains. Pollen grains from 4-5 different flowers of the same

species were collected. These were acetolysed by treatment with acetic anhydride and concentrated sulphuric acid following the procedure of Erdtman (1966). The acetolysed pollen grains were mounted in glycerine. In each case, measurements of largest equatorial diameter of 50 pollen grains were taken. Photographs of the pollen grains were taken with the camera attached to the Olympus microscope using x100 objective with oil immersion. The quantitative data was subjected to Single Linkage Cluster analysis.

**Herbarium Survey:** All plant species used in this work were collected by me, authenticated in the Ife Herbarium and voucher specimens deposited in the same herbarium.

**Table 1: IFE Herbarium (Osun state, Nigeria) voucher specimen number for the twelve Asteraceae species studied**

Species	Voucher specimen no.	Collectors
<i>Ageratum conyzoides</i> Linn.	IFE 16884	Akinnubi Olufunmilola
<i>Aspilia africana</i> (Pers) C.D. Adams.	IFE 16882	Akinnubi Olufunmilola
<i>Bidens pilosa</i> Linn.	IFE 16887	Akinnubi Olufunmilola
<i>Chromolaena odorata</i> (L.) Kings & Robinson	IFE 16881	Akinnubi Olufunmilola
<i>Crassocephalum crepidioides</i> (Benth) S. Moore	IFE 16880	Akinnubi Olufunmilola
<i>Emilia praetermissa</i> Milne Redhead.	IFE 16874	Akinnubi Olufunmilola
<i>Launaea taraxacifolia</i> Willd.	IFE 16877	Akinnubi Olufunmilola
<i>Synedrella nodiflora</i> Gaertn	IFE 16886	Akinnubi Olufunmilola
<i>Tithonia diversifolia</i> (Hemsl) A. Gray	IFE 16875	Akinnubi Olufunmilola
<i>Tridax procumbens</i> Linn.	IFE 16876	Akinnubi Olufunmilola
<i>Vernonia amygdalina</i> Del. Cent	IFE 16885	Akinnubi Olufunmilola
<i>Vernoniacinerea</i> Linn.	IFE 16883	Akinnubi Olufunmilola

### Results

Generally, the pollen grains of species studied are spheroidal in shape, polyentaporate, acolpate, tricolporate and polycolporate. Pollen grains were either echinate or spinate, yellow to yellowish brown. Pollens are in the group media and minuta, Spines are short with thin walls and pores are densely situated. The size of pollen grains, length of spines, thickness of walls, number of pores, thickness between pores

showed variations from species to species as shown in Table 1.

The qualitative result of the study of pollen grains for members of the family of Asteraceae studied is presented below; *Ageratum conyzoides* Linn. (Plate 1A) : Pollens are polypantoporate, prolate-spheroidal and are small (minuta); spines are with sharp pointed ends are present while pores are densely situated.

*Aspilia africana* (Pers.) C.D. Adams (Plate 1B): Pollens are tricolporate, oblate-spheroidal and medium (media); spines with pointed ends while pores are densely situated.

*Bidens pilosa* Linn. (Plate 1C): Pollens are polyantoporate, oblate-spheroidal and medium (media); spines with blunt ends are present while pores are densely situated.

*Chromolaena odorata* (Linn.) King and Robinson. (Plate 1D): Pollens are polycolporate, oblate-spheroidal and are generally medium (media); spines are short with thin wall and pores are densely situated.

*Crassocephalum crepidioides* (Benth.) S. Moore (Plate 1E): Pollens are polycolporate, oblate-spheroidal and generally medium (media); pores are densely situated.

*Emilia praetermissa* Milne-Redhead (Plate 1F): Pollens are polycolporate, prolate-spheroidal and medium (media); pores are densely situated.

*Launaea taraxacifolia* Willd. (Plate 1G) : Pollens are acolpate, prolate-spheroidal and are medium (media); spines are small and short with sharp ends making the wall appear serrated; the wall is thin and pores are

sparsely situated, usually between 3 in number.

*Synedrella nodiflora* Gaertn.(Plate 1H): Pollens are polycolporate, prolate-spheroidal and are medium (media); spines are short with pointed end with thin wall and pores are densely situated.

*Tithonia diversifolia* (Hemsl.) A. Gray(Plate 1I): Pollens are polyantoporate, prolate-spheroidal and are generally medium (media); spines are fairly long with pointed end with thin wall and the pores are densely situated.

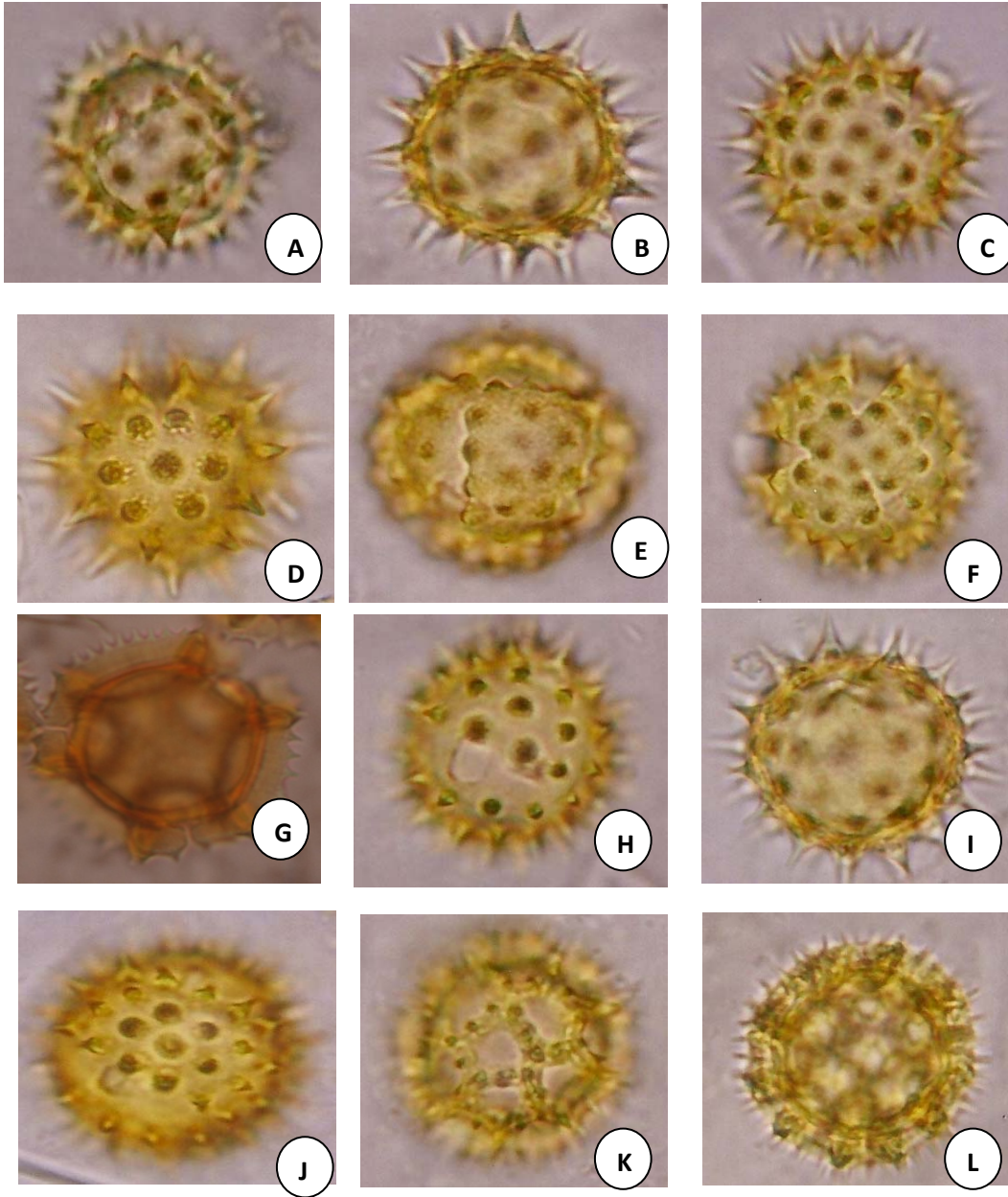
*Tridax procumbens* Linn. (Plate 1J): Pollens are polyantoporate, prolate-spheroidal and are medium (media); spines are short with pointed ends with thin wall and pores are densely situated.

*Vernonia amygdalina* Del Cent. (Plate 1K): Pollens are polycolporate, prolate-spheroidal and are medium (media). Spines are short with thin wall and pores are densely situated.

*Vernonia cinerea* Linn. (Plate 1L): Pollens are polycolporate, prolate-spheroidal and are medium (media); spines are short with thin wall and pores are densely situated.

**Table 2: Summary of the pollen grain morphological characters of species studied**

Species	Exine pattern	Pollen shape	Apertural status
<i>Ageratum conyzoides</i>	Spinate	Prolate Spheroidal	Polyantoporate
<i>Aspilia africana</i>	Spinate	Oblate Spheroidal	Tricolporate
<i>Bidens pilosa</i>	Spinate	Oblate Spheroidal	Polyantoporate
<i>Chromolaena odorata</i>	Spinate	Oblate Spheroidal	Polycolporate
<i>Crassocephalum crepidioides</i>	Echinate	Oblate Spheroidal	Polycolporate
<i>Emilia praetermissa</i>	Echinate	Prolate Spheroidal	Polycolporate
<i>Launaea taraxacifolia</i>	Spinate	Prolate Spheroidal	Acolpate
<i>Synedrella nodiflora</i>	Spinate	Prolate Spheroidal	Polycolporate
<i>Tithonia diversifolia</i>	Spinate	Prolate Spheroidal	Polyantoporate
<i>Tridax procumbens</i>	Spinate	Prolate Spheroidal	Polyantoporate
<i>Vernonia amygdalina</i>	Echinate	Prolate Spheroidal	Polycolporate
<i>Vernonia cinerea</i>	Echinate	Prolate Spheroidal	Polycolporate



**Plate 1:** Pollen grains of the Asteraceae species studied. A. *Ageratum conyzoides* Linn., B. *Aspilia africana* (Pers) C.D Adams, C. *Bidens pilosa* Linn., D. *Chromolaena odorata* (Linn.) king & Robinson, E. *Crassocephalum crepidioides* Benth S. Moore, F. *Emilia praetermissa* Milne-Redhead, G. *Launaea taraxacifolia* Willd, H. *Synedrella nodiflora* Gaertn, I. *Tithonia diversifolia* (Hemsl) A. Gray, J. *Tridax procumbens* Linn., K. *Vernonia amygdalina* Del. Cent, L. *Vernonia cinerea* Linn; Magnification X1300

### Cluster Analysis

The taxa studied were subjected to Single Linkage Cluster Analysis using the pollen parameters. The result of the cluster analysis is presented in Fig 1. There are two major

clusters. The first main cluster is delineated into two sub clusters; the first sub cluster comprises of four species namely; A. *conyzoides*, E. *praetermissa*, S. *nodiflora* and B. *pilosa* which were linked at similarity

coefficient level of 0.9966. *A. conyzoides* and *E. praetermissa* are closely related at similarity coefficient level of 0.9978. *S. nodiflora* and *B. pilosa* are closely related at the same similarity coefficient level. The second sub cluster comprises of four species which are; *V. cinerea*, *V. amygdalina*, *C. crepidiodes* and *C. odorata*. *V. cinerea* and *V. amygdalina* have the highest similarity coefficient level of 0.9998.

*C. crepidioides* and *C. odorata* are linked together at coefficient level of 0.9982. In the second main cluster, *T. diversifolia* is distinctly separated from the other 3 species namely; *T. procumbens*, *A. africana* and *L. taraxacifolia*. *T. procumbens* and *A. africana* are at the same similarity coefficient level of 0.9990 and these two species are linked with *L. taraxacifolia* at similarity coefficient level of 0.9962.

**Table3: Measurements of diameter of pollen grains, Wall thickness, Number of pores, Thickness between pores and Length of spines**

Name of Species of pollen	Diameter of pollen grains ( $\mu\text{m}$ )	Pollen wall thickness ( $\mu\text{m}$ )	Number of pores ( $\mu\text{m}$ )	Thickness between pores ( $\mu\text{m}$ )	Length of spines ( $\mu\text{m}$ )
<i>Ageratum conyzoides</i>	21.12 $\pm$ 0.36	2.9 $\pm$ 2.00	11.0 $\pm$ 2.00	2.93 $\pm$ 0.15	2.9 $\pm$ 2.00
<i>Aspilia Africana</i>	34.10 $\pm$ 1.78	2.9 $\pm$ 2.00	9.0 $\pm$ 1.50	2.7 $\pm$ 2.13	5.0 $\pm$ 0.30
<i>Bidens pilosa</i>	38.27 $\pm$ 0.70	2.9 $\pm$ 2.00	16.0 $\pm$ 2.00	3.93 $\pm$ 0.18	6.9 $\pm$ 0.30
<i>Chromolaena odorata</i>	25.77 $\pm$ 1.26	3.6 $\pm$ 0.24	9.0 $\pm$ 2.00	2.70 $\pm$ 2.04	2.8 $\pm$ 2.00
<i>Crassocephalum crepidioides</i>	37.30 $\pm$ 1.05	2.7 $\pm$ 1.90	13.0 $\pm$ 2.50	0.89 $\pm$ 0.74	1.9 $\pm$ 0.70
<i>Emilia praetermissa</i>	39.54 $\pm$ 0.46	3.6 $\pm$ 0.85	18.0 $\pm$ 1.50	0.90 $\pm$ 0.25	2.1 $\pm$ 0.90
<i>Launaea taraxacifolia</i>	38.67 $\pm$ 0.67	2.8 $\pm$ 2.02	7.54 $\pm$ 0.88	3.17 $\pm$ 0.67	5.9 $\pm$ 0.30
<i>Synedrella nodiflora</i>	33.75 $\pm$ 0.52	2.9 $\pm$ 2.04	15.0 $\pm$ 1.35	3.60 $\pm$ 0.19	4.6 $\pm$ 0.30
<i>Tithonia diversifolia</i>	40.60 $\pm$ 0.37	7.9 $\pm$ 2.04	11.0 $\pm$ 1.55	3.50 $\pm$ 0.30	7.1 $\pm$ 0.30
<i>Tridax procumbens</i>	40.06 $\pm$ 0.43	3.4 $\pm$ 0.34	9.0 $\pm$ 1.55	2.9 $\pm$ 2.02	4.8 $\pm$ 0.40
<i>Vernonia amygdalina</i>	29.82 $\pm$ 0.43	2.8 $\pm$ 2.00	11.0 $\pm$ 1.25	2.9 $\pm$ 0.90	4.1 $\pm$ 1.80
<i>Vernonia cinerea</i>	28.45 $\pm$ 0.57	2.8 $\pm$ 2.10	10.0 $\pm$ 2.50	2.8 $\pm$ 2.01	3.9 $\pm$ 1.70

## Discussion

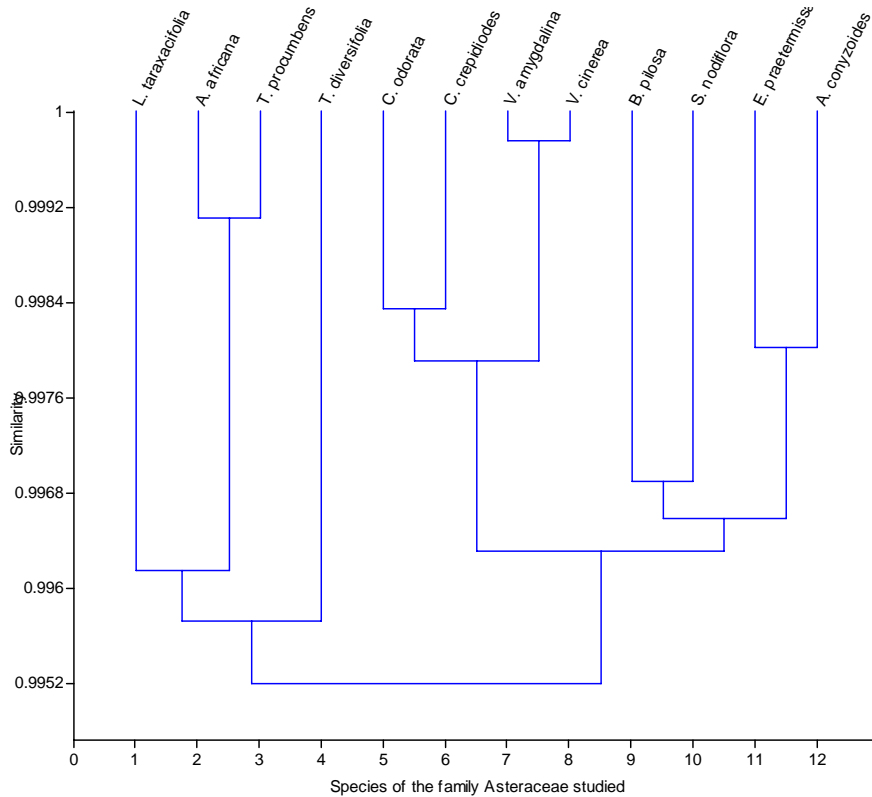
Pollen architecture has great significance in the taxonomy of angiosperms and in revealing inter-relationship among them. (Moore and Webb, 1978). Palynology is not only useful in taxonomy but has proved to be useful in genetic and evolutionary studies, forensic science, allergy studies, tracing generational history of individual species and taxa, paleo-climatic studies and the study of the past human impact on vegetation. (Erdtman, 1943). In general appearance, the pollen grains of all species of Asteraceae studied were spheroidal, acolpate, colporate and polyaperturate with apertures. Wodehouse (1935) interpreted these apertures on the wall surface as furrows which have become so shortened that they coincided in extent with their enclosed pores.

All the pollens were echinate or spinate, sticky and yellow to yellowish-brown colour. The exine pattern (Echinate) encountered in *C. crepidioides* and *E. praetermissa* agreed to their placing in the same tribe (Senecioneae), also the exine pattern in *V. amygdalina* and *V. cinerea* (Echinate) also contribute to placing the species in the same tribe (Vernonieae). This agrees with the findings of Perveen (1999) about shape, colour and exine patterns.

Apart from the common generic features, there were also some differences in other pollen morphological features which characterized the species, In general, the pollen diameter of species in Asteraceae is small. Erdtman (1952) classified pollen grains according to size into groups: perminuta (diameter less than 10 $\mu\text{m}$ ), minuta (diameter

10-25µm), media (diameter 25-50µm), magna (diameter 50-100µm), permagna (diameter 100-200µm), giganta (diameter greater than 200µm). According to this classification, the pollen grains of the species of Asteraceae studied belong to the groups minuta and

media *A. conyzoides* is in the group minuta while the other species belong to the group media which connotes that the pollen grains diameter measured is classificatory for others and delimiting for *A. conyzoides*.



**Fig. 1: Single Linkage Cluster Analysis of the Asteraceae species studied based on quantitative pollen grain parameters.**

Spines were found in the pollen walls of all the species of the family studied. Short spines occurred in *A. conyzoides*, *C. odorata*, *C. crepidioides*, *E. praetermissa*, *S. nodiflora*, *T. procumbens*, *V. amygdalina* and *V. cinerea* (Table 1) while long spines occurred in *A. africana*, *B. pilosa*, *L. taraxacifolia* and *T. diversifolia*. It is worthy of note that the pollen walls of all the species are thin. This has been previously reported by Perveen (1999) for the family Asteraceae. The pollen grains of *T. diversifolia* were distinct in having the longest spines and the thickest wall (Table 1) while that of *C. crepidioides* were distinct in having the shortest spines. They also had similar

wall thickness with *E. praetermissa*. The pollen grain of *C. odorata* is distinct in having thick pollen wall while *E. praetermissa* have the largest number of pores but there is exception in *L. taraxacifolia* where the pores are very few in number. This separates *L. taraxacifolia* from the other species. The pattern of clustering does not agree with tribal classification except for *V. amygdalina* and *V. cinerea* that are clustered together at the highest similarity coefficient level which agrees to placing them in the same tribe (Vernonieae) (Fig. 1). Generally, the pollen pores are densely situated, therefore, thickness between pores are small except in *L.*

*taraxacifolia* where the pollen pores are sparsely situated leading to thickness between pores.

In the world of palynology, modern (and fossil) pollen of members of the Asteraceae are difficult to distinguish with the light microscope (LM) because they appear very similar. Most are polycolporate, have spines while a few have echinate (very small spines). However, from this study, some pollen grains have been differentiated based on some fairly distinct characters; *C. crepidioides* have echina on the exine. The pollen of *E. praetermissa* appear somewhat similar to *C. crepidioides* in the thickness between pores except that its grains are larger. *T. diversifolia* pollen grains are the largest, their spines have sharp edges. *A. conyzoides* pollen grains are the smallest of the grains in this group both in size and in the spines (Table 1). The pollen grains of *T. procumbens* are also similar to *T. diversifolia* in diameter of pollen grains measured (Table 1).

Number of colpi on pollen grains has been a useful tool in tracing evolutionary relationship among the species studied. The advanced dicotyledons have more colpi than the primitive ones, with either a colpus (monocolpate) or none at all (acolpate) (Walker, 1976 and Adedeji, 2005). The species studied have some common features which support their classification as members of a family and also some features which are useful tools in delimiting the different species as distinct species.

## References

- Adedeji, O. (2005). Pollen morphology of the three species of the genus *Emilia* Cass. (Asteraceae) from Nigeria. *Thaiszia - J. Bot.* 15: 1 - 9.
- Erdtman, G. (1943). *An introduction to Pollen Analysis*. Chronic Botanical. Co., Waltham, Mass., U.S.A. pp. 1 - 10.
- Erdtman, G. (1952). Pollen morphology and Plant Taxonomy Angiosperm.
- Erdtman, G. (1966). Pollen morphology and Plant Taxonomy Angiosperms (An Introduction to Palynology I). Hafner Publishing Company, New York (USA).
- Mbagwu, F.N., E.G. Chime and C.I.N. Unamba (2009). Palynological studies on five species of Asteraceae. *Afr. J. Biotechnol.* 8 (7); 1222 - 1225.
- Ming, L.C. (1999). *Ageratum conyzoides*, A tropical source of medicinal and agricultural Products. In: J. Janick (Ed.) *Perspectives on New Uses*. ASHS Press, Alexandria V.A. 469 - 473
- Moore, P.D. and J.A. Webb (1978). *An illustrated guide to Pollen analysis*. Hodder and Stoughton, London
- Olorode O. (1984). *Taxonomy of West Africa Flowering Plants*. Longman Group Ltd., London and New York. pp 98 - 100 and 158pp.
- Patel, G.I. and R.M. Datta (1958). Pollen grain studies in various types of *Cochorus olitorius* L. *C. capsularis* L. and some other species of *Cochorus*. *Grana Palynological* I:18- 24.
- Perveen N. (1999). Palynological study of selected medicinal plant of family Asteraceae Department of Botany of Arid Agriculture. Rawalpindi Palmstan pp 23- 28.
- Prasad S.S. (1963). Pollen Grain Morphology of certain Malvaceae. *Journal of Indian Botanical Society*: 42; 463-468.
- Sowunmi, M.A. (1973). Pollen grains of Nigerian plants. *Grana* 13: 145 - 186
- Walker I.W. (1976). Evolution of exine structure in the pollen of primitive angiosperms. *Amer. J. Bot.* 61: 891-902.
- Wodehouse, R.P. (1935): *Pollen grains*. McGraw-Hill Book Co. New York