

## Review Article

# Effect of heat stress on dairy cow production, reproduction, health, and potential mitigation strategies

Abdul Rahman Sesay\*

Department of Animal Science, Njala Campus, Njala University, Sierra Leone

(Received: March 03, 2023; Revised: June 05, 2023; Accepted: June 06, 2023; Published: June 24, 2023)

\*Corresponding Author: Abdul Rahman Sesay (E-mail: arsesay368@gmail.com)

### ABSTRACT

Extreme weather events are becoming more common and more severe as a result of climate change, and this has serious implications for the future of livestock, farmer income and livelihoods, and food security worldwide. Dairy cattle have become more heat sensitive due to selective breeding for higher production and increased feedlot operations. The harmful effects of heat stress cause hyperthermia, oxidative stress, and other physiological changes in dairy cows. Environmental heat stress causes a decrease in feed intake, leading to a decrease in milk production in dairy cows. The main method to check for reductions in milk production in dairy cows during the summer is an accurate evaluation of heat stress and effective mitigation strategies. Three primary management strategies have been proposed to reduce heat stress and stabilize dairy cattle performance in increasingly hot and humid climates. Short-term management options include physical alteration of the environment and nutritional management, while long-term management strategy includes discovering heat-tolerant genetic traits and genomic selection for heat tolerance. This review looks at how heat stress has affected the dairy industry's sustainability and elaborates on genomic selection for thermotolerance in dairy cattle as sustainable breeding practices to increase dairy cows' ability to withstand high temperatures.

**Key words:** Climate change, Dairy cows, Genomic selection, Heat stress, Management strategies

### INTRODUCTION

Extreme weather events are becoming more common and more severe as a result of climate change, and this has serious implications for the future of livestock, farmer incomes and livelihoods, and food security worldwide (Lipper *et al.*, 2014). The climate is projected to change rapidly, with global warming expected to increase by 1.5 degrees Celsius by 2040 and the average surface temperature predicted to increase by 1.88 degrees Celsius by 2100 (Jevrejeva *et al.*, 2016; Geiger *et al.*, 2021). Heat stress (HS) caused by climate change is a major factor that affects global livestock production. The strength of HS is governed by several factors that act together, including but not limited to air temperature, humidity, sunshine, and wind velocity (Kadzere *et al.*, 2002; Herbut *et al.*, 2018). When an animal cannot disperse an excess of endogenous heat to maintain homeothermic properly, hyperthermia arises due to an imbalance between metabolic heat generation and body heat degeneracy (Berman, 2011; Bernabucci *et al.*, 2014). These environmental conditions affect animal development, reproduction, and productivity (Osei-Amponsah *et al.*, 2019).

Reduced milk production can be traced to several causes, including increased body temperature that causes a decrease in feed intake, changes in hormone profiles, and modifications in energy metabolism (Baumgard *et al.*, 2007; Collier *et al.*, 2008). HS has been shown to affect milk production in dry cows during successive lactations by altering the mammary gland (Rhoads *et al.*, 2009; Carabaño *et al.*, 2019). Due to decreased

feed intake, milk production drops from 25% to 40% in dairy cows with HS (Baumgard *et al.*, 2011). The dairy industry suffers a significant financial burden when milk production decreases by 10 to 35% during the hot summer (St-Pierre *et al.*, 2003). Annual financial losses due to high-stakes syndrome in the dairy sector can be attributed to several factors, the most prominent of which is a decrease in milk production. However, reduced reproductive efficiency increases diseases, and increased mortality plays a role (Vitali *et al.*, 2009). For example, heat stress causes billions of dollars per year in losses in cattle production worldwide (Osei-Amponsah *et al.*, 2019). In the United States, heat stress is responsible for between \$1.69 and \$2.36 billion yearly economic losses to the livestock industry. The dairy industry accounts for \$897 to \$1500 million of these losses. The pork industry generates between \$299 and \$316 million, while the poultry sector generates between \$128 and \$165 million (St-Pierre *et al.*, 2003). Milk production decreases, reproduction slows, metabolic problems increase, and immune systems weaken due to high blood pressure, all contributing to economic losses in the dairy sector (Sordillo, 2016; Zigo *et al.*, 2021).

More studies are needed on how to adapt to climate change, particularly in developing countries (Escarcha *et al.*, 2018). As the world population increases, it will become more necessary to expand livestock production to meet food demand (FAO, 2018; Henry *et al.*, 2018). The incidence, duration, and severity of HS in dairy cattle will increase as global warming continues (Min *et al.*, 2007; Theusme *et al.*, 2022). Therefore,

it has become a problem for the global dairy sector to reduce the impact of HS on dairy herd production (Bouraoui *et al.*, 2002). This review looks at how heat stress has affected the dairy industry's sustainability and elaborates on genomic selection for thermotolerance in dairy cattle as sustainable breeding practices to increase dairy cows' ability to withstand high temperatures.

## THERMONEUTRAL ZONE

Cattle can keep their core body temperature stable within relatively tight parameters. The thermoregulation systems in these animals are activated when exposed to temperatures that cause pain, cold, or heat (Lezama-García *et al.*, 2002). The goal of these processes is to maintain an internal temperature that is within the physiologically tolerable range. Body heat production equals body heat dissipation in the thermoneutral zone (TNZ). The animals are in the thermal comfort range when confined within the thermoneutral zone. As a result, the body's metabolism drops to its minimum level (Lezama-García *et al.*, 2002). This disorder prevents the animal from using its normal physiological processes to lose heat to its surroundings or produce its own internal thermal energy. As a result, it can maintain equilibrium in body temperature with its surrounding environment and direct all of its available energy toward achieving optimal performance levels. In this circumstance, the sensory processes of heat exchange are sufficient to keep the temperature at thermal equilibrium (Mota-Rojas *et al.*, 2021).

Minimal physiological expenses and maximum productivity are typically achieved within the TNZ. The TNZ range of an animal depends on several factors, including its age, breed, species, kind of feed consumed, diet composed of, the initial state of temperature acclimatization, production method, special housing and pens, tissue insulation, external insulation, and behavior (Mota-Rojas *et al.*, 2021). The best thermal neutral zone is an ambient temperature below 21 °C throughout the day (Kolbe *et al.*, 2022). Dairy cows can only perform at their highest levels of efficiency if they maintain a constant core body temperature in the TNZ. TNZ ranges from 1.7 °C to 21 °C for lactating dairy cattle and depends on the breed, degree of acclimatization, milk production, and dry matter intake (Kolbe *et al.*, 2022). When an organism's temperature deviates too far from its optimal level, it hinders its ability to carry out production operations (Heal & Park, 2016). Even slight increases in core temperature significantly affect tissue and endocrine function, affecting fertility, growth, breastfeeding, and working ability (Angilletta, 2009; Heal & Park, 2016).

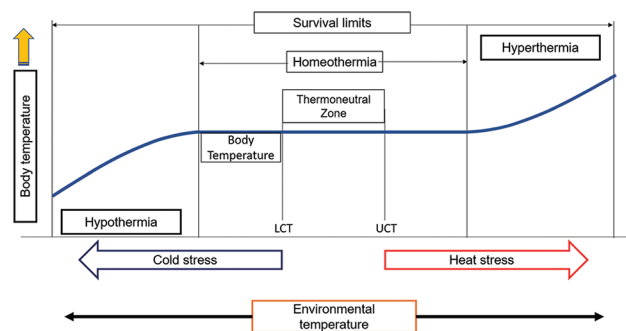
When AT increases and exceeds the UCT limit in the homeotherm zone; as a result, animals have difficulty activating evaporative thermolysis systems (Kamal *et al.*, 2016; Sejian *et al.*, 2018). Animals rely on water evaporation to rid their bodies of the excess heat that their metabolisms produce (Smith *et al.*, 2015). Cattle begin to change their behavior

as the variation in environmental temperature reaches the limit of the UCT. Performance deteriorates when body temperature rises above the UCT, causing a decrease in milk production and a change in milk composition when the cow experiences heat stress. They respond to a rise in temperature by increasing their need for shade, drinking and feeding less, and decreasing their activity near cooler surfaces (Ratnakaran *et al.*, 2017; Madhusoodan *et al.*, 2019). When an animal's body temperature increases above its ability to cool itself by evaporation, a condition known as hyperthermia sets in and ultimately causes death (Figure 1).

The LCT is the temperature below which an increase in its heat production rate is required to keep the internal temperature constant (Figure 1). When the ambient temperature drops below the LCT, the animal's thermoregulation system swings into action to maintain body heat or generate more heat inside the animal. This is accomplished by consuming more food, which generates metabolic heat by breaking down nutrients in the digestive system (Hankenson *et al.*, 2018). To retain heat, animals form groups, avoid lying on frigid surfaces, and expose themselves directly to solar radiation if they have access to these resources (Nardone *et al.*, 2006). Animals can die if the circumstances of their environment do not change to make them more thermally comfortable (Nardone *et al.*, 2006; Collier & Gebremedhin, 2015).

## HEAT STRESS IN DAIRY COWS

The term "stress" refers to the intensity of external pressures destabilizing an organism's internal systems from their neutral or ground position (Kadzere *et al.*, 2002). Heat stress, in the context of a dairy cow, can be thought of as the sum of all pressures that cause the cow to make modifications on scales from molecular to ecological to prevent physiological malfunction and better suit its environment (Kadzere *et al.*, 2002; Gagge & Gonzalez, 2010). Homeotherms exert considerable effort to maintain proper biochemical reactions and physiological processes linked to metabolism to maintain their core body temperature within relatively restricted limits. An animal must maintain homeothermy by being in thermal equilibrium



**Figure 1:** Variation in body temperature with increased or decreased environmental temperature. LCT is the lower critical temperature, and UCT is the upper critical temperature (Ehrlemark & Sallvik, 1996)

with its surroundings, including radiation, air temperature, movement, and humidity (Aggarwal & Upadhyay, 2013). There is a comfort zone for lactating dairy cows where the temperature remains between 5 °C and 25 °C, known as the thermoneutral zone (TNZ) (Golher *et al.*, 2021). The cow is under heat stress when outside temperatures exceed 26 °C and cannot cool off properly. In the absence of extreme heat stress, the thermoregulatory systems of the body typically keep temperatures within 1 °C of normal (Rejeb *et al.*, 2016).

Temperature readings have been used to evaluate the effects of thermal stress and relief (Berman, 2005). The body temperature of dairy cattle is a sensitive measure of thermal stress due to the high sensitivity of animals to heat (Gebremedhin *et al.*, 2016; Shu *et al.*, 2021). The temperature-humidity index (THI) was proposed as an indication of thermal climatic conditions by McDowell *et al.* (1976). The air temperatures of the wet and dry bulb for a given day are used to obtain the THI in the following manner.

$$THI = 0.72(W + D) + 40.6 \quad (2.1)$$

where *W* is the temperature of the wet bulb, and *D* is the dry bulb in °C.

Comfortable temperatures have a THI of 70 or less, stressful temperatures of 75-78, and extremely uncomfortable temperatures of 78 or more, rendering thermoregulation mechanisms ineffective and rendering lactating cows incapable of maintaining appropriate body temperatures. Milk synthesis is traditionally believed to decrease when THI reaches 72 (Herbut & Angrecka, 2012; Bernabucci *et al.*, 2014). The threshold for heat stress was estimated to be a THI value of 72 for production and around 68 for reproduction. Increased respiration rates and rectal temperatures are hallmarks of heat stress, linked to reduced metabolism and poor reproductive performance in dairy calves. Therefore, herd management choices are influenced by estimated THI based on ambient temperature (AT) and relative humidity (RH) for dairy cattle during the warm season (Kadzere *et al.*, 2002; Bohmanova *et al.*, 2007).

## RESPONSE TO HEAT STRESS

Homeotherms like dairy cows have evolved to thrive in essentially temperature-neutral habitats. Natural metabolic balance is disrupted by HS, which often results in a positive feedback loop after temperatures rise above the UCT (Kadzere *et al.*, 2002; Polsky & von Keyserlingk, 2017). The metabolism of significant nutrients in dairy cattle increases metabolic heat production, making the high-producing cow susceptible to high ambient temperatures and humidity (Sammad *et al.*, 2020a). Assuming that the methods for dissipating heat are the same since TNZ shifts downward as milk output, feed intake, and heat generation increase, high-producing cows are much more affected than low-producing cows (Sammad *et al.*, 2020b). The dairy cows' physical, metabolic, and physiological processes are activated to mitigate the effects of heat stress

and keep the body at a constant temperature (Polsky & von Keyserlingk, 2017; Michael *et al.*, 2022). Most of the changes involve lowering its metabolic rate and increasing the rate at which heat is lost to the environment. Increased respiration rates, rectal temperature, heart rate, panting, drooling, intense sweating, decreased feed intake, and reduced milk production are the reaction of dairy cows to temperatures in TNZ (Roth, 2008; Hempel *et al.*, 2019). Depending on the breed, dairy cows may physically respond differently to heat stress. Compared to *Bos taurus* cattle, *Bos indicus* and other tropical breeds are less susceptible to temperature stress (Kadzere *et al.*, 2002; Bilby, 2011). Different breeds of cattle react differently to heat stress because their genes have evolved to cope with different temperatures (El-Tarabany & El-Tarabany, 2015).

The animal cools in several ways, including convection, radiation, evaporation of water, and exhaled air (Dahl, 2020; Brito *et al.*, 2021). At higher temperatures, vaporization replaces radiation and convection as the environment's primary means of heat dissipation. When environmental temperatures rise, a cow's primary evaporative cooling method is thermal sweating. The latent heat of vaporization is the energy needed to turn it into a gas. As external temperatures increase and the temperature variance between the cow and the air decreases, a larger fraction of the cow's metabolic heat is lost by evaporation (Silanikove, 2000; Atrian & Shahryar, 2012).

## EFFECT OF HEAT STRESS ON THE NUTRITION AND METABOLISM OF DAIRY COWS

Reduced metabolism in cattle under heat stress was related to decreased thyroid hormone secretion and motility, leading to increased intestinal fullness (Kadzere *et al.*, 2002; Patra & Kar, 2021). High temperatures of 35 °C reduce the plasma concentration of growth hormone and the rate at which it is secreted (Collier *et al.*, 2008; Roushdy *et al.*, 2018). When THI increases to more than 70, growth hormone levels in milk from cows with low, medium, and high production decreases, indicating that growth hormone production was repressed to reduce metabolic heat output (Roushdy *et al.*, 2018). Heat-stressed cows had lower plasma growth hormone levels even when fed the same amount as when not under heat stress (Farooq *et al.*, 2010). During heat stress, the thyroid hormones triiodothyronine (T3) and thyroxine (T4) decrease, which they attributed to efforts to reduce their metabolic heat output (Kadzere *et al.*, 2002; Settivari *et al.*, 2007). Higher levels of adrenaline and norepinephrine in the blood plasma of dairy cows were related to heat stress (Rhoads *et al.*, 1986).

Lactating dairy cows have a total body water content between 75% and 81% of their body weight (Kadzere *et al.*, 2002). The environment, temperature, humidity, dry matter intake (DMI), feed composition, and milk production significantly regulate milk consumption in lactating dairy cows (Gorniak *et al.*, 2014). High-yielding cows have a higher



DMI than low-yielding cows and a positive correlation between DMI and water intake (Huhtanen *et al.*, 2007). HS increases the plasma and extracellular fluid volume to help the stressed cow maintain a stable body temperature (Bernabucci *et al.*, 2010). Cows experiencing HS have a higher rumen water content than usual because their water turnover rate is elevated (Conte *et al.*, 2018). HS reduces blood flow to the epithelium surrounding the rumen and reduces reticular motility and rumination in farm animals (Conte *et al.*, 2018; Meneses *et al.*, 2021). HS increases digesta volume and water content in the rumen, making it more able to act as a pool of water to mitigate the impact of HS on rumen motility (Meneses *et al.*, 2021). Heat-stressed cattle had lower ruminal pH and higher concentrations of lactic acid, which could reduce rumen motility (Yadav *et al.*, 2013). Up to 25% of the body weight of ruminants comes from digesta fill, most of which is produced in the rumen, where the dry matter to water ratio is roughly 1:20 (Van Soest, 2018; Cagle *et al.*, 2019). Increased intestinal fullness can contribute to heat discomfort in high-yielding cattle (Aggarwal & Upadhyay, 2013). HS would limit motility due to its decreased concentrations of VFA in cattle rumens (Conte *et al.*, 2018).

Milk production decreases due to HS because the rostral cooling region of the hypothalamus stimulates the medial center of satiety, which impedes the lateral appetite center (Jose *et al.*, 2020). The decrease in feed intake was the main reason for the observed decrease in milk production. The diet of ruminants can be affected by hormones that regulate their gastrointestinal motility (Aggarwal & Upadhyay, 2013). HS causes a decrease in appetite, which can be associated with fullness in the stomach (Yadav *et al.*, 2013). Lactating cows' feed intake decreases at an AT of 26°C (Kadzere *et al.*, 2002), and this decrease can reach 40% at an AT of 40 °C (Tao & Dahl, 2013). Heat stress reduces roughage intake and rumination in high-yield lactating dairy cows (Han *et al.*, 2019). In addition to consuming less feed, heat-stressed cows alter their feeding regimens to lower their endogenous heat output during the warmest hours. Depending on the degree of dietary fiber, ruminal fermentation contributes between 3 and 8% of the total endogenous heat produced by bovines (Min *et al.*, 2019).

## HEAT STRESS EFFECT ON MILK PRODUCTION

Animal performance is frequently inhibited by climatic parameters such as AT, sunlight, RH, airflow, and the relationships between these variables (Habeb *et al.*, 2018). Dairy cattle have been found to react differently physiologically and productively depending on the type and duration of heat stress they experience. Several studies have found a decrease in milk and fat production as a direct effect of high AT (Binsiya *et al.*, 2017; Habeb *et al.*, 2018). HS accounted for 3 to 10% of the variation in lactation milk production (Aggarwal & Upadhyay, 2013). The ideal temperature range for lactating cows is 5 to 25 °C, where milk production is at its highest (Kadzere *et al.*, 2002). There may be a 10%-40% drop in milk

production if cows are exposed to AT above the maximum limit of their comfort zone (Michael *et al.*, 2022). However, the effect of HS on milk production varies according to the cow's genetic potential to produce milk, the stage of lactation, and the degree of heat. This means that high-producing dairy cows lose more milk than medium- or low-producing cows when HS is present (Bernabucci *et al.*, 2010; Min *et al.*, 2019). When dairy cows are exposed to HS, milk production decreases by 35% in medium-lactation cows but only by 14% in early lactation cows (Bernabucci *et al.*, 2010). HS increases oxidative stress, which changes mammary secretory tissue cell metabolic and molecular activity, decreasing cellular efficiency for synthesizing milk components (Gao *et al.*, 2019).

## EFFECT OF HEAT STRESS ON THE REPRODUCTION OF DAIRY COWS

Seasonal high environmental temperatures were associated with the poor reproductive success of dairy cows for many different reasons (De Rensis *et al.*, 2015; Woodroffe *et al.*, 2017). The high AT well above the TNZ of cattle dramatically decreased the conception rate, likely leading to increased embryonic loss (De Rensis & Scaramuzzi, 2003). Selection for milk production led to deficits in thermoregulatory abilities under heat stress. This accentuates the seasonal decline in fertility caused by HS (Wathes *et al.*, 2007). Holstein cows that are estrous in the summer have 4.5 mounts per estrus, while those that are estrus in the winter have 8.6 mounts per estrus (Sammad *et al.*, 2020a). Heat stress decreased peripheral estradiol-17b concentrations in the estrus (Ghosh *et al.*, 2017). When animals were exposed to HS between days 3 and 5 of the estrous cycle, the dominant follicular fluid contained much more androstenedione and significantly less estradiol-17b (Orief *et al.*, 2014). Another reason for the decrease in fertility during summer in hot places was the decline in bull fertility caused by heat stress (Hansen, 2007).

Heat stress also negatively affects early embryonic development and the ovum and sperm in the reproductive canal (Hansen, 2007). Furthermore, heat stress may have altered the hormonal balance of the dam (Ayo *et al.*, 2011). In culture, heat shock from mature bovine oocytes can lead to lower protein synthesis, fertilization rate, and subsequent developmental competence (Nabenishi *et al.*, 2012). The number of cells in bovine embryos flushed from super-ovulated heifers on days 6 or 7 of pregnancy was reduced when they were subjected to heat shock in culture (Nabenishi *et al.*, 2012).

## EFFECT OF HEAT STRESS ON THE HEALTH OF THE DAIRY COW

During the warmer months of the year, the prevalence of animal diseases in dairy cows is known to increase for several reasons (De Rensis & Scaramuzzi, 2003; Nardone *et al.*, 2010). Conditions in an environment that range from warm to hot and humid are optimal for the growth

of vectors and other disease-causing agents (Kadzere *et al.*, 2002). Warmer summer months in tropical regions see an increase in ticks and other internal parasites, compelling farmers to drench and dip their animals more often than in the cooler winter months (Silanikove, 2000). Heat stress can directly and negatively affect the health of dairy cows and parasite problems that can arise during the warmer months (Silanikove, 2000; Das *et al.*, 2016).

Clinical or subclinical health problems are caused by the impact of HS on the physiological processes of the high-producing cow. 24% of cows who gave birth in the summer retained the placenta and developed postpartum metritis, while this occurred in just 8% of cows during the cooler months of the year (Adnane *et al.*, 2017; Temesgen *et al.*, 2022). The effects of heat stress on dairy cows during the summer were shown to be solely responsible for this difference, which had a significant level. Additionally, cows with retained placenta and postpartum metritis were shown to have longer gestation periods than those without these symptoms (Dubuc *et al.*, 2011). Early pregnancy is linked to the retained placenta and postpartum metritis, which have serious financial implications for dairy producers (Dubuc *et al.*, 2011; Mordak & Stewart, 2015). In certain cases, numerous neuroendocrine changes caused by heat stress can shorten the gestational period (De Renzi & Scaramuzzi, 2003; Khodaei-Motlagh *et al.*, 2011). Compared to the colder months, scorching summer caused 11% greater ketosis in dairy cows (Biswal *et al.*, 2016; Wu, 2020).

## POTENTIAL MITIGATION STRATEGIES FOR HEAT STRESS IN DAIRY COWS

### Environment management

Environmental management is required in most regions of the world to improve cow welfare and reduce loss of production under harsh temperature conditions throughout the summer (Nienaber & Hahn, 2007). Shade, appropriate air exchange, excellent air movement, drinking water, and evaporative cooling are currently accessible methods to reduce the heat stress of dairy cows (Nienaber & Hahn, 2007; Henry *et al.*, 2018). The installation of fans has been shown to decrease environmental temperatures, alleviate HS, and improve respiratory and rectal temperatures and metabolic rates (Castro-Montoya & Corea, 2021). During the warmer months, air exchanges are required every minute or less to remove moisture, gases, heat, and other contaminants from the animal area. Turbulent airflow around cows increases convective heat transmission, improves evaporation, and eliminates hot patches (Kuczynski *et al.*, 2011). In resting, feeding, and holding facilities, air speeds of 3.5 to 5 miles per hour (mph) are desirable. Water is used in evaporative cooling to promote heat transmission from cows. Because evaporative cooling systems include the introduction of water into the air of the animal area, ventilation systems with adequate air exchange are required

to remove moisture-laden air and circulate fans to accelerate evaporation (Adin *et al.*, 2009).

Providing cows with self-controlled showers offers cooling on an individual animal basis while reducing group water use (Polsky *et al.*, 2017). Physical constructions that provide shade, such as trees, roofs, or fabrics, can provide more favorable microclimates for cows due to the decrease in exposure to solar radiation and AT. Cow body temperature and respiration rate are reduced when protected from direct sun exposure (Polsky *et al.*, 2017; Heras-Molina *et al.*, 2020). However, depending on the climatic conditions, dairy cows have various preferences for a shade structure, which should be addressed when developing farm heat abatement options (Tucker & Schütz, 2009). Although cattle prefer natural shade, livestock shading can be achieved using trees, buildings, or mobile constructions. By decreasing insolation and surface temperature and improving heat conduction from the cow's body to the environment, barn orientation may also help alleviate HS (Angrecka & Herbut, 2016).

### Feeding management

Heat stress affects several systems in cows, including feeding and digesting, milk production, and reproduction (Atrian & Shahryar, 2012). Fortunately, there are a variety of strategies to help cows cope with heat stress, including nutrition assistance. The reduction in feed intake caused by heat stress can be mitigated partly by boosting the metabolizable energy (ME) ratio and the density of nutrients (Atrian & Shahryar, 2012). The maintenance needs for ME increases by 10-15% at 85-105°F compared to 65-70°F because heat dissipation requires more energy (Early, 1998). Feeding protein-deficient diets increase the heat burden on cows due to increased heat output from tissue protein metabolism (Forbes, 2007). Supplemental protein can help reduce heat stress and improve dry matter intake (DMI) under heat stress. Because bypass fats do not affect rumen fermentation, they are an excellent alternative to increasing total fat in feed during hot weather (Shwartz *et al.*, 2009).

In hot weather, increasing the frequency of feeding has been shown to minimize heat production and equalize nutrient absorption by spreading the total increase in heat caused by feeding and digesting over a longer period. It may also help to maintain constant rumen fermentation by helping the digestion of greater concentrates without lowering the pH of the rumen or the acetate-propionate ratio (Kaufman, 2016). The peak generation of heat from digestive activities occurs around three hours after consumption by cows. Feeding cows earlier in the morning and later in the evening than usual could help them reach these peaks during the colder periods of the day (Mader *et al.*, 2010). Cool, clean, easily available, free choice water is critical for helping cows cope with heat stress (Aublet *et al.*, 2009; Mader *et al.*, 2010). To increase fiber intake and maintain optimal rumen activity, provide high-quality feed to your highest-yielding cows under the greatest stress. Reduce the amount of starch in food and increase the

fat content to maintain energy to reduce the heating impact of fermentation on the rumen. To best meet farm objectives, choose the most suitable form of fat supplement according to the fatty acid composition of the supplement (Moran, 2005; Knapp *et al.*, 2014). Increasing the pH of rumen, yeast, and rumen buffers can help reduce the danger of acidosis (Humer *et al.*, 2018).

### Supplementation of vitamins, minerals, and electrolytes in diets

When cows are stressed by heat, their potassium loss increases five times due to perspiration (Kadzere *et al.*, 2002). Concentrates are often potassium-deficient; therefore, potassium supplementation is required in the diet of dairy cows when concentrate feeding is increased (Soetan *et al.*, 2010; Wilhelm-Olany, 2019). Sodium supplementation is recommended, as heat-stressed cows excrete more sodium through their urine. Due to their buffering capabilities, dietary bicarbonates (HCO<sub>3</sub>) can also be beneficial (Mader *et al.*, 2010; Kundu *et al.*, 2013). Adding buffers to ration concentrates provides rumen-calming support, with a recommended dose of approximately a third-pound buffer to 45 pounds DMI. Trace minerals such as Mn, Zn, Mo, P, and Se have improved metabolic state and general health (Bicalho *et al.*, 2014). B-complex vitamins, ascorbic acid, vitamin E (tocopherol), rumen-protected niacin, and nicotinic acid are all useful (Taniguchi *et al.*, 2006). Thiazolidinediones (TZD) can increase glucose use and energy breakdown and maybe a beneficial therapy during HS (Taniguchi *et al.*, 2006; Schoenberg & Overton, 2011). Dietary betaine, such as TZD, can be a preferable alternative in heat-stressed nursing cows (Wang *et al.*, 2019). Chromium supplementation has also increased energy metabolism and output in heat-challenged nursing cows (Knapp *et al.*, 2014; Bin-Jumah *et al.*, 2020). In animals, niacin (vitamin B3) has been shown to increase vasodilation and lipid metabolism. Niacin reduces the effects of HS and increases metabolism in nursing dairy cows (Panda *et al.*, 2017). Niacin at 6g/cow/day is recommended to lower skin temperature and increase milk production. Heat stress depletes vitamin C levels in plasma and tissue; therefore, supplementation may be necessary (Dos Santos *et al.*, 2019; Bin-Jumah *et al.*, 2020).

### Selection for heat tolerance

Cattle suffering from heat stress can be helped with shade structures, fans, and sprinklers (Moran, 2005). However, this might not be a viable option in the prevalent pastoral systems in many nations. Furthermore, the modification of its environment and its management as a mitigation strategy for heat stress in dairy cows is temporary. Dairy cows produce less milk when temperature and humidity exceed a specific threshold, and genetics correlate with the degree to which milk production drops. Different authors have shown that the degree to which milk production decreases in response to increased HS differs between animals and is only a weak to

moderately heritable trait (Ravagnolo *et al.*, 2000; Bernabucci *et al.*, 2014). Rectal temperature and the rate at which milk production drops in hot weather are two measures of heat tolerance in dairy cattle that can be influenced by selective breeding due to their low (0.1) to moderate (0.3) heritability (Ravagnolo *et al.*, 2000; Dikmen *et al.*, 2012; Nguyen *et al.*, 2016). Given the size of the estimated heritability, genetic selection for resistance to HS may be feasible. Increasing the temperature tolerance would be an additional tactic with long-lasting results. To breed dairy cows that are more heat tolerant and have a smaller decrease in milk production during heat stress conditions, breeding values for heat tolerance in dairy cattle must be determined (Dikmen *et al.*, 2012; Nguyen *et al.*, 2016).

### Genes involved in heat tolerance

The degree to which dairy cattle handle high temperatures depends on genetics and physiology. According to genomic research, certain areas of the genome appear to be significant in controlling body temperature in dairy cattle, suggesting that heat tolerance is a quantitative trait impacted by multiple regions of the genome (Nguyen *et al.*, 2016). The slick hair gene in cattle is one of the most significant thermotolerant genes discovered to date. A dominant gene called the slick hair gene produces animals with extremely short and smooth hair (Huson *et al.*, 2014). There was a significant difference between respiratory rate, sweat rate, vaginal temperature, and rectum temperature of slick and normal-haired Holstein cattle (Dikmen *et al.*, 2014). One reason why slick-haired animals can better regulate body temperature is an increased sweating rate (Dikmen *et al.*, 2008). Holsteins with slick hair have a greater thermoregulatory capacity than animals with non-slick hair, and their milk production decreases less dramatically over the summer. During heat stress, smooth-haired Holstein cows can control their body temperature more successfully than wild-type cows (Dikmen *et al.*, 2008; Dikmen *et al.*, 2014).

The Slick gene has been identified as a significant candidate gene that affects hair length and controls heat tolerance in *Bos taurus* cattle (Olson *et al.*, 2003). Huson *et al.* (2014) identified a consensus area for the SLICK locus on *BTA20*, including *SKP2* and *SPEF2* as probable candidate genes. Dikmen *et al.* (2013) reported that *BTA24* is the main genomic region associated with rectal temperature. Other SNPs associated with RT were located in *BTA16*, *BTA5*, *BTA4*, and *BTA26*. Macciotta *et al.* (2017) also detected *BTA26* as a genomic region associated with milk production under HS conditions. Luo *et al.* (2021) identify *FAM107B* and *PHRF1* as the main candidate genes that influence the response of dairy cattle to heat stress. Among the 200 differentially expressed genes found by Liu *et al.* (2020), several were associated with heat tolerance and can be used for the Marker Assisted Selection Program to improve heat tolerance and minimize loss of production in dairy cows. These genes include *IGFB2*, *OAS2*, *MX2*, *IFIT5*, *FGF2*, *ALAS2*, *AOX1*, *SCT*, *TGFB2*, *BPI*, *GPX2*, *EGF*, and *IFIT2*. Cheruiyot *et al.* (2021) identified specific potential variations and genes associated with the nervous system (*ITPR1*, *ITPR2*, and

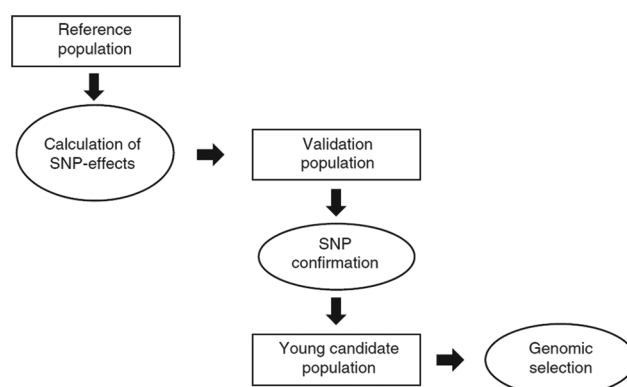


*GRIA4*) and neuroactive ligand-receptor interaction activities for heat tolerance (*NPF2R2*, *CALCR*, and *GHR*). Grisart *et al.* (2004) identified the substitution of non-conservative lysine into alanine (K232A) in the *DGAT1* gene, which was projected to be the nucleotide of causative quantitative traits underlying a quantitative trait locus) that affects milk fat composition. Littlejohn *et al.* (2016) discovered that the percentage of milk fat and other traits related to milk compositions are strongly influenced by a group of 17 non-coding variations throughout *MGST1*. Carvalheiro *et al.* (2019) found evidence linking *REG3A* and *REG3G* to the sensitivity of beef cattle to adverse conditions. Zeng *et al.* (2018) suggested that the two mutations of the *PRLH* and *SOD1* genes in Chinese cattle were associated with heat tolerance.

Deng *et al.* (2010) postulate that *EIG121* is connected to endosome-lysosome compartments and may play a crucial role in autophagy. *EIG121* may protect cells against cell death under adverse circumstances, such as starvation and exposure to cytotoxic chemicals, by upregulating the autophagy pathway. Sigdel *et al.* (2019) reported that at least three distinct genomic regions in *BTA5*, *BTA14*, and *BTA15* were shown to be highly correlated with milk production in the face of heat stress. Such areas contain potential genes, including (*HSF1*, *MAPK8IP1*, and *CDKN1B*), that are directly involved in the cellular response to heat stress. Zamorano-Algandar *et al.* (2021) reported that three SNPs in *AVPR1A*, *PRLR*, and *SSTR2* were related to the opening day, while five SNPs in *IGFBP2*, *IGFBP5*, *PRLR*, *PIAS1*, and *SSTR2* were shown to be related to the pregnancy rate in Holstein cattle. Hernandez-Cordero *et al.* (2017) identified seven SNPs within seven genes (*AVPR1A*, *Furin*, *IGFBP5*, *IGFBP6*, *PMCH*, *PRLR*, and *STAT5B*) that were found to be related to milk yield in heat-stressed Holstein cows.

### Genomic selection

Genomic selection is an attractive option because it enables the selection of young bulls (and heifers) based on heat tolerance to GEBV and other traits (Figure 2). A heat tolerance selection program should aim to breed more resilient dairy cattle (Nguyen *et al.*, 2016). Milk production and conception rates naturally drop in summer, but this decline can be mitigated by selective breeding to tolerance to heat (Sammad *et al.*, 2020a). For dairy bulls, commonly chosen for breeding based on GEBV rather than progeny testing, heat tolerance is necessary if such a trait should be considered. Since most young dairy bulls have already been genotyped, the comparative cost of extra GEBV is relatively cheap, making adding a GEBV for heat tolerance even more advantageous. Subsequently, the frequency of occurrence is expected to increase, and it will be crucial to accelerate the heat tolerance breeding process in specific dairy regions to adapt to future climates (Chang-Fung-Martel *et al.*, 2017). To determine estimated genomic breeding values (GEBV) for heat tolerance, Nguyen *et al.* (2016) used only genotyped sires in the reference set and only first-parity data to achieve precision for heat tolerance with changes in milk, fat, and protein yields of 0.48, 0.50, and 0.49 in Holstein



**Figure 2:** Schematic illustration of population and genomic selection (Calus *et al.*, 2013)

validation sires and 0.44, 0.61, and 0.53 in Jersey validation sires. Gene expression breeding values (GEBV) for heat tolerance were positively correlated with fertility (0.29-0.39 in Holstein and 0.15-0.27 in Jerseys) but negatively correlated with several productivity traits. On the other hand, selection might result in cows with less resistance to cold. Therefore, before introducing heat tolerance into dairy cattle selection criteria, it is necessary to examine the negative correlations between heat tolerance and other economically important traits (Osei-Amponsah *et al.*, 2019).

Creating a reference population of genotyped animals exhibiting heat tolerance phenotypes, the choice of the phenotypic itself, and the model used to incorporate genomic information pose the most hurdles in building a GEBV for heat tolerance (Osei-Amponsah *et al.*, 2019). When considering the phenotype to select, some studies have combined test day records for milk yield traits with THI as a measure of heat load to assess heritable components of heat tolerance (Bernabucci *et al.*, 2014; Nguyen *et al.*, 2016). Animal thermal adaptations and performance can be evaluated using several methods, including monitoring changes in internal body temperature and THI. The drop rate in milk production related to variability in response to HS was first measured using daily milk yield and temperature-humidity data (Ravagnolo *et al.*, 2000). Due to the availability of large datasets from regular recordings on dairy farms, this approach has been widely used (Nguyen *et al.*, 2016). Since heat stress is already a part of dairy cattle breeding programs in several regions of the world, much work has been put into finding breeding solutions. As THI increased above a thermoneutral threshold, Ravagnolo *et al.* (2000) found that heat tolerance exhibited an increase in additive genetic variation. Another theory suggests that the variation in heat tolerance increases with each consecutive lactation (Aguilar *et al.*, 2009; Bernabucci *et al.*, 2014). Protein production in Australian dairy cattle decreased to a THI of 60. Reduced milk production can be used as heat tolerance since it is easily collected on a massive scale by integrating data from weather stations and herd recording systems. For practically all genotyped sires, this allows us to calculate the daughter trait deviations (DTD) for the trait in question, paving the way

for building a large reference population to calculate GEBV (Nguyen *et al.*, 2016).

## CONCLUSIONS

The negative consequences cause hyperthermia, oxidative stress, and other physiological changes in dairy cows. These cause a decrease in feed intake, leading to a decrease in milk production in dairy cows. The main method to check for reductions in milk production in dairy cows during the summer is an accurate assessment of HS and effective mitigation strategies. Three primary management strategies have been proposed to reduce HS and stabilize the performance of dairy cattle in increasingly hot and humid climates. Short-term management options include physical alteration of the environment and nutritional management, while long-term management strategy includes a genomic selection for heat tolerance.

Therefore, it may be possible to prevent substantial economic losses caused by heat stress by identifying certain genes or gene markers associated with heat tolerance and the genomic selection of animals with such genes. Ultimately, examining the negative correlations between heat tolerance and other economically important traits is necessary before introducing heat tolerance into dairy cattle selection criteria.

## REFERENCES

- Adin, G., Gelman, A., Solomon, R., Flamenbaum, I., Nikbachat, M., Yosef, E., Zenou, A., Shamay, A., Feuermann, Y., Mabjeesh, S. J., & Miron, J. (2009). Effects of cooling dry cows under heat load conditions on mammary gland enzymatic activity, intake of food and water, and performance during the dry period and after parturition. *Livestock Science*, 124(1-3), 189-195. <https://doi.org/10.1016/j.livsci.2009.01.014>
- Adnane, M., Kaidi, R., Hanzen, C., & England, G. C. W. (2017). Risk factors of clinical and subclinical endometritis in cattle: a review. *Turkish Journal of Veterinary & Animal Sciences*, 41(1), 1-11. <https://doi.org/10.3906/vet-1603-63>
- Aggarwal, A., & Upadhyay, R. (2013). *Heat stress and animal productivity* (Vol. 188). Delhi, India: Springer.
- Aguilar, I., Misztal, I., & Tsuruta, S. (2009). Genetic components of heat stress for dairy cattle with multiple lactations. *Journal of Dairy Science*, 92(11), 5702-5711. <https://doi.org/10.3168/jds.2008-1928>
- Angilletta Jr, M. J. (2009). *Thermal adaptation: a theoretical and empirical synthesis*. <https://doi.org/10.1093/acprof:oso/9780198570875.001.1>
- Angrecka, S., & Herbut, P. (2016). Impact of barn orientation on insolation and temperature of stalls surface. *Annals of Animal Science*, 16(3), 887-896. <https://doi.org/10.1515/aoas-2015-0096>
- Atrian, P., & Shahryar, H. A. (2012). Heat stress in dairy cows (a review). *Research in Zoology*, 2(4), 31-37.
- Aublet, J.-F., Festa-Bianchet, M., Bergero, D., & Bassano, B. (2009). Temperature constraints on foraging behaviour of male Alpine ibex (*Capra ibex*) in summer. *Oecologia*, 159(1), 237-247. <https://doi.org/10.1007/s00442-008-1198-4>
- Ayo, J. O., Obidi, J. A., & Rekwot, P. I. (2011). Effects of heat stress on the well-being, fertility, and hatchability of chickens in the northern Guinea savannah zone of Nigeria: a review. *International Scholarly Research Notices*, 2011, 838606. <https://doi.org/10.5402/2011/838606>
- Baumgard, L. H., Rhoads, R. P., & Moore, C. E. (2007). The effects of heat stress on production and its nutritional implications. *Proceedings Penn State Cattle Nutrition Workshop*, 29-38.
- Baumgard, L. H., Wheelock, J. B., Sanders, S. R., Moore, C. E., Green, H. B., Waldron, M. R., & Rhoads, R. P. (2011). Postabsorptive carbohydrate adaptations to heat stress and monensin supplementation in lactating Holstein cows. *Journal of Dairy Science*, 94(11), 5620-5633. <https://doi.org/10.3168/jds.2011-4462>
- Berman, A. (2005). Estimates of heat stress relief needs for Holstein dairy cows. *Journal of Animal Science*, 83(6), 1377-1384. <https://doi.org/10.2527/2005.8361377x>
- Berman, A. (2011). Invited review: Are adaptations present to support dairy cattle productivity in warm climates? *Journal of Dairy Science*, 94(5), 2147-2158. <https://doi.org/10.3168/jds.2010-3962>
- Bernabucci, U., Biffani, S., Buggiotti, L., Vitali, A., Lacetera, N., & Nardone, A. (2014). The effects of heat stress in Italian Holstein dairy cattle. *Journal of Dairy Science*, 97(1), 471-486. <https://doi.org/10.3168/jds.2013-6611>
- Bernabucci, U., Lacetera, N., Baumgard, L. H., Rhoads, R. P., Ronchi, B., & Nardone, A. (2010). Metabolic and hormonal acclimation to heat stress in domesticated ruminants. *Animal*, 4(7), 1167-1183. <https://doi.org/10.1017/s175173111000090x>
- Bicalho, M. L. S., Lima, F. S., Ganda, E. K., Foditsch, C., Meira Jr, E. B. S., Machado, V. S., Teixeira, A. G. V., Oikonomou, G., Gilbert, R. O., & Bicalho, R. C. (2014). Effect of trace mineral supplementation on selected minerals, energy metabolites, oxidative stress, and immune parameters and its association with uterine diseases in dairy cattle. *Journal of Dairy Science*, 97(7), 4281-4295. <https://doi.org/10.3168/jds.2013-7832>
- Bilby, T. R. (2011). Nutritional, managerial and hormonal strategies to mitigate the negative effects of heat stress on reproduction. *Revista Brasileira de Zootecnia*, 1-14.
- Bin-Jumah, M., El-Hack, M. E. A., Abdelnour, S. A., Hendy, Y. A., Ghanem, H. A., Alsafy, S. A., Khafaga, A. F., Noreldin, A. E., Shaheen, H., Samak, D., Momenah, M. A., Allam, A. A., Alkahtane, A. A., Alkahtani, S., Abdel-Daim, M. M., & Aleya, L. (2020). Potential use of chromium to combat thermal stress in animals: A review. *Science of the Total Environment*, 707, 135996. <https://doi.org/10.1016/j.scitotenv.2019.135996>
- Binsiya, T. K., Sejian, V., Bagath, M., Krishnan, G., Hyder, I., Manimaran, A., Lees, A. M., Gaughan, J. B., & Bhatta, R. (2017). Significance of hypothalamic-pituitary-adrenal axis to adapt to climate change in livestock. *International Research Journal of Agricultural and Food Sciences*, 2(1), 1-20.
- Biswal, S., Nayak, D. C., & Sardar, K. K. (2016). Prevalence of ketosis in dairy cows in milk shed areas of Odisha state, India. *Veterinary World*, 9(11), 1242-1247. <https://doi.org/10.14202/vetworld.2016.1242-1247>
- Bohmanova, J., Misztal, I., & Cole, J. B. (2007). Temperature-humidity indices as indicators of milk production losses due to heat stress. *Journal of Dairy Science*, 90(4), 1947-1956. <https://doi.org/10.3168/jds.2006-513>
- Bourauoi, R., Lahmar, M., Majdoub, A., & Belyea, R. (2002). The relationship of temperature-humidity index with milk production of dairy cows in a Mediterranean climate. *Animal Research*, 51(6), 479-491. <https://doi.org/10.1051/>



- animres:2002036
- Brito, L. F., Bedere, N., Douhard, F., Oliveira, H. R., Arnal, M., Peñagaricano, F., Schinckel, A. P., Baes, C. F., & Miglior, F. (2021). Genetic selection of high-yielding dairy cattle toward sustainable farming systems in a rapidly changing world. *Animal*, *15*(S1), 100292. <https://doi.org/10.1016/j.animal.2021.100292>
- Cagle, C. M., Batista, L. F. D., Anderson, R. C., Fonseca, M. A., Cravey, M. D., Julien, C., & Tedeschi, L. O. (2019). Evaluation of different inclusion levels of dry live yeast impacts on various rumen parameters and in situ digestibilities of dry matter and neutral detergent fiber in growing and finishing beef cattle. *Journal of Animal Science*, *97*(12), 4987-4998. <https://doi.org/10.1093/jas/skz342>
- Calus, M. P. L., Berry, D. P., Banos, G., de Haas, Y., & Veerkamp, R. F. (2013). Genomic selection: the option for new robustness traits? *Advances in Animal Biosciences*, *4*(3), 618-625. <https://doi.org/10.1017/S2040470013000186>
- Carabaño, M. J., Ramón, M., Menéndez-Buxadera, A., Molina, A., & Díaz, C. (2019). Selecting for heat tolerance. *Animal Frontiers*, *9*(1), 62-68. <https://doi.org/10.1093/af/vfy033>
- Carvalho, R., Costilla, R., Neves, H. H. R., Albuquerque, L. G., Moore, S., & Hayes, B. J. (2019). Unraveling genetic sensitivity of beef cattle to environmental variation under tropical conditions. *Genetics Selection Evolution*, *51*, 29. <https://doi.org/10.1186/s12711-019-0470-x>
- Castro-Montoya, J., & Corea, E. E. (2021). Heat stress effects in primiparous and multiparous lactating crossbred cows under a warm environment and their responses to a cooling treatment. *Animal Production Science*, *61*(6), 577-585. <https://doi.org/10.1071/AN19398>
- Chang-Fung-Martel, J., Harrison, M. T., Rawnsley, R., Smith, A. P., & Meinke, H. (2017). The impact of extreme climatic events on pasture-based dairy systems: a review. *Crop and Pasture Science*, *68*(12), 1158-1169. <https://doi.org/10.1071/CP16394>
- Cheruiyot, E. K., Haile-Mariam, M., Cocks, B. G., MacLeod, I. M., Xiang, R., & Pryce, J. E. (2021). New loci and neuronal pathways for resilience to heat stress in cattle. *Scientific Reports*, *11*(1), 16619. <https://doi.org/10.1038/s41598-021-95816-8>
- Collier, R. J., & Gebremedhin, K. G. (2015). Thermal biology of domestic animals. *Annual Review of Animal Biosciences*, *3*, 513-532. <https://doi.org/10.1146/annurev-animal-022114-110659>
- Collier, R. J., Collier, J. L., Rhoads, R. P., & Baumgard, L. H. (2008). Invited review: genes involved in the bovine heat stress response. *Journal of Dairy Science*, *91*(2), 445-454. <https://doi.org/10.3168/jds.2007-0540>
- Conte, G., Ciampolini, R., Cassandro, M., Lasagna, E., Calamari, L., Bernabucci, U., & Abeni, F. (2018). Feeding and nutrition management of heat-stressed dairy ruminants. *Italian Journal of Animal Science*, *17*(3), 604-620. <https://doi.org/10.1080/1828051X.2017.1404944>
- Dahl, G. E. (2020). Physiology of lactation in dairy cattle-challenges to sustainable production. In F. W. Bazer, G. C. Lamb & G. Wu (Eds.), *Animal agriculture: Sustainability, Challenges and Innovations* (pp. 121-129). Massachusetts, United States: Academic Press. <https://doi.org/10.1016/B978-0-12-817052-6.00007-0>
- Das, R., Sailo, L., Verma, N., Bharti, P., Saikia, J., Imtiwati, & Kumar, R. (2016). Impact of heat stress on health and performance of dairy animals: A review. *Veterinary World*, *9*(3), 260-268.
- De Rensis, F., & Scaramuzzi, R. J. (2003). Heat stress and seasonal effects on reproduction in the dairy cow-a review. *Theriogenology*, *60*(6), 1139-1151. [https://doi.org/10.1016/s0093-691x\(03\)00126-2](https://doi.org/10.1016/s0093-691x(03)00126-2)
- De Rensis, F., Garcia-Ispuerto, I., & López-Gatius, F. (2015). Seasonal heat stress: Clinical implications and hormone treatments for the fertility of dairy cows. *Theriogenology*, *84*(5), 659-666. <https://doi.org/10.1016/j.theriogenology.2015.04.021>
- Deng, L., Feng, J., & Broadus, R. R. (2010). The novel estrogen-induced gene EIG121 regulates autophagy and promotes cell survival under stress. *Cell Death & Disease*, *1*(4), e32. <https://doi.org/10.1038/cddis.2010.9>
- Dikmen, S., Alava, E., Pontes, E., Fear, J. M., Dikmen, B. Y., Olson, T. A., & Hansen, P. J. (2008). Differences in thermoregulatory ability between slick-haired and wild-type lactating Holstein cows in response to acute heat stress. *Journal of Dairy Science*, *91*(9), 3395-3402. <https://doi.org/10.3168/jds.2008-1072>
- Dikmen, S., Cole, J. B., Null, D. J., & Hansen, P. J. (2012). Heritability of rectal temperature and genetic correlations with production and reproduction traits in dairy cattle. *Journal of Dairy Science*, *95*(6), 3401-3405. <https://doi.org/10.3168/jds.2011-4306>
- Dikmen, S., Cole, J. B., Null, D. J., & Hansen, P. J. (2013). Genome-wide association mapping for identification of quantitative trait loci for rectal temperature during heat stress in Holstein cattle. *PLoS One*, *8*(7), e69202. <https://doi.org/10.1371/journal.pone.0069202>
- Dikmen, S., Khan, F. A., Huson, H. J., Sonstegard, T. S., Moss, J. I., Dahl, G. E., & Hansen, P. J. (2014). The SLICK hair locus derived from Senepol cattle confers thermotolerance to intensively managed lactating Holstein cows. *Journal of Dairy Science*, *97*(9), 5508-5520. <https://doi.org/10.3168/jds.2014-8087>
- Dubuc, J., Duffield, T. F., Leslie, K. E., Walton, J. S., & LeBlanc, S. J. (2011). Effects of postpartum uterine diseases on milk production and culling in dairy cows. *Journal of Dairy Science*, *94*(3), 1339-1346. <https://doi.org/10.3168/jds.2010-3758>
- Early, R. (1998). Milk concentrates and milk powders. *The technology of dairy products*, *2*.
- Ehrlemark, A. G., & Sällvik, K. G. (1996). A model of heat and moisture dissipation from cattle based on thermal properties. *Transactions of the ASAE*, *39*(1), 187-194. <https://doi.org/10.13031/2013.27497>
- El-Tarabany, M. S., & El-Tarabany, A. A. (2015). Impact of maternal heat stress at insemination on the subsequent reproductive performance of Holstein, Brown Swiss, and their crosses. *Theriogenology*, *84*(9), 1523-1529. <https://doi.org/10.1016/j.theriogenology.2015.07.040>
- Escarcha, J. F., Lassa, J. A., & Zander, K. K. (2018). Livestock under climate change: a systematic review of impacts and adaptation. *Climate*, *6*(3), 54. <https://doi.org/10.3390/cli6030054>
- FAO. (2018). *The future of food and agriculture – Alternative pathways to 2050*. Italy, Rome: Food and Agriculture Organization of the United Nations. Retrieved from <https://www.fao.org/3/CA1553EN/ca1553en.pdf>
- Farooq, U., Samad, H. A., Shehzad, F., & Qayyum, A. (2010). Physiological responses of cattle to heat stress. *World Applied Sciences Journal*, *8*, 38-43.
- Forbes, J. M. (2007). Environmental factors affecting intake. In J. M. Forbes (Eds.), *Voluntary Food Intake and Diet Selection in Farm Animals* (pp. 365-390) Wallingford, UK: CABI. 365-390.
- Gagge, A. P., & Gonzalez, R. R. (2010). Mechanisms of heat exchange: biophysics and physiology. *Comprehensive Physiology*, 45-84. <https://doi.org/10.1002/cphy.cp040104>
- Gao, S. T., Ma, L., Zhou, Z., Zhou, Z. K., Baumgard, L. H., Jiang, D., Bionaz, M., & Bu, D. P. (2019). Heat stress negatively affects

- the transcriptome related to overall metabolism and milk protein synthesis in mammary tissue of midlactating dairy cows. *Physiological Genomics*, 51(8), 400-409. <https://doi.org/10.1152/physiolgenomics.00039.2019>
- Gebremedhin, K. G., Wu, B., & Perano, K. (2016). Modeling conductive cooling for thermally stressed dairy cows. *Journal of Thermal Biology*, 56, 91-99. <https://doi.org/10.1016/j.jtherbio.2016.01.004>
- Geiger, T., Gütschow, J., Bresch, D. N., Emanuel, K., & Frieler, K. (2021). Double benefit of limiting global warming for tropical cyclone exposure. *Nature Climate Change*, 11, 861-866. <https://doi.org/10.1038/s41558-021-01157-9>
- Ghosh, C. P., Kesh, S. S., Tudu, N. K., & Datta, S. (2017). Heat stress in dairy animals-Its impact and remedies: A review. *International Journal of Pure & Applied Bioscience*, 5(1), 953-965. <https://doi.org/10.18782/2320-7051.2577>
- Golher, D. M., Patel, B. H. M., Bhoite, S. H., Syed, M. I., Panchbhai, G. J., & Thirumurugan, P. (2021). Factors influencing water intake in dairy cows: a review. *International Journal of Biometeorology*, 65, 617-625. <https://doi.org/10.1007/s00484-020-02038-0>
- Gorniak, T., Meyer, U., Südekum, K.-H., & Dänicke, S. (2014). Impact of mild heat stress on dry matter intake, milk yield and milk composition in mid-lactation Holstein dairy cows in a temperate climate. *Archives of Animal Nutrition*, 68(5), 358-369. <https://doi.org/10.1080/1745039x.2014.950451>
- Grisart, B., Farnir, F., Karim, L., Cambisano, N., Kim, J.-J., Kvasz, A., Mni, M., Simon, P., Frère, J.-M., Coppeters, W., & Georges, M. (2004). Genetic and functional confirmation of the causality of the DGAT1 K232A quantitative trait nucleotide in affecting milk yield and composition. *Proceedings of the National Academy of Sciences*, 101(8), 2398-2403. <https://doi.org/10.1073/pnas.0308518100>
- Habeeb, A. A., Gad, A. E., & Atta, M. A. (2018). Temperature-humidity indices as indicators to heat stress of climatic conditions with relation to production and reproduction of farm animals. *International Journal of Biotechnology and Recent Advances*, 1(1), 35-50.
- Han, J., Shao, J., Chen, Q., Sun, H., Guan, L., Li, Y., Liu, J., & Liu, H. (2019). Transcriptional changes in the hypothalamus, pituitary, and mammary gland underlying decreased lactation performance in mice under heat stress. *The FASEB Journal*, 33(11), 12588-12601. <https://doi.org/10.1096/fj.201901045r>
- Hankenson, F. C., Marx, J. O., Gordon, C. J., & David, J. M. (2018). Effects of rodent thermoregulation on animal models in the research environment. *Comparative Medicine*, 68(6), 425-438. <https://doi.org/10.30802/aalas-cm-18-000049>
- Hansen, P. J. (2007). Effects of environment on bovine reproduction. *Current Therapy in Large Animal Theriogenology*, 431-442.
- Heal, G., & Park, J. (2016). Reflections - temperature stress and the direct impact of climate change: a review of an emerging literature. *Review of Environmental Economics and Policy*, 10(2). <https://doi.org/10.1093/reep/rew007>
- Hempel, S., Menz, C., Pinto, S., Galán, E., Janke, D., Estellés, F., Müschner-Siemens, T., Wang, X., Heinicke, J., Zhang, G., Amon, B., del Prado, A., & Amon, T. (2019). Heat stress risk in European dairy cattle husbandry under different climate change scenarios - uncertainties and potential impacts. *Earth System Dynamics*, 10(4), 859-884. <https://doi.org/10.5194/esd-10-859-2019>
- Henry, B. K., Eckard, R. J., & Beauchemin, K. A. (2018). Adaptation of ruminant livestock production systems to climate changes. *Animal*, 12(S2), s445-s456. <https://doi.org/10.1017/S1751731118001301>
- Heras-Molina, A., Pacheco, J. L. P., & Astiz, S. (2020). Reproductive Efficiency in Dairy Cows: Change in Trends! In J. C. Gardón & K. Satué (Eds.), *Biotechnologies Applied to Animal Reproduction* (pp. 87-138) New York, US: Apple Academic Press.
- Herbut, P., & Angrecka, S. (2012). Forming of temperature-humidity index (THI) and milk production of cows in the free-stall barn during the period of summer heat. *Animal Science Papers and Reports*, 30(4), 363-372.
- Herbut, P., Angrecka, S., & Walczak, J. (2018). Environmental parameters to assessing of heat stress in dairy cattle - a review. *International Journal of Biometeorology*, 62, 2089-2097. <https://doi.org/10.1007/s00484-018-1629-9>
- Hernández-Cordero, A. I., Sánchez-Castro, M. A., Zamorano-Algandar, R., Luna-Nevárez, P., Rincón, G., Medrano, J. F., Speidel, S. E., Enns, R. M., & Thomas, M. G. (2017). Genotypes within the prolactin and growth hormone insulin-like growth factor-I pathways associated with milk production in heat stressed Holstein cattle. *Genetics and Molecular Research*, 16(4), gmr16039821. <https://doi.org/10.4238/gmr16039821>
- Huhtanen, P., Rinne, M., & Nousiainen, J. (2007). Evaluation of the factors affecting silage intake of dairy cows: a revision of the relative silage dry-matter intake index. *Animal*, 1(5), 758-770. <https://doi.org/10.1017/S175173110773673X>
- Humer, E., Petri, R. M., Aschenbach, J. R., Bradford, B. J., Penner, G. B., Tafaj, M., Südekum, K.-H., & Zebeli, Q. (2018). Invited review: Practical feeding management recommendations to mitigate the risk of subacute ruminal acidosis in dairy cattle. *Journal of Dairy Science*, 101(2), 872-888. <https://doi.org/10.3168/jds.2017-13191>
- Huson, H. J., Kim, E.-S., Godfrey, R. W., Olson, T. A., McClure, M. C., Chase, C. C., & Rizzi, R., O'Brien, A. M. P., Tassell, C. P. V., Garcia, J. F., & Sonstegard, T. S. (2014). Genome-wide association study and ancestral origins of the slick-hair coat in tropically adapted cattle. *Frontiers in Genetics*, 5, 101. <https://doi.org/10.3389/fgene.2014.00101>
- Jevrejeva, S., Jackson, L. P., Riva, R. E., Grinsted, A., & Moore, J. C. (2016). Coastal sea level rise with warming above 2 °C. *Proceedings of the National Academy of Sciences*, 113(47), 13342-13347. <https://doi.org/10.1073/pnas.1605312113>
- Jose, B., Konda, P. K., Tripathi, M. K., Sharun, K., Kumar, S., Singh, G., Sarkar, M., & Kumar, P. (2020). Appraisal of Thermo-adaptability among Tharparkar and Crossbred Cattle Calves. *International Journal of Current Microbiology and Applied Sciences*, 9(11), 1588-1594. <https://doi.org/10.20546/ijcmas.2020.911.188>
- Kadzere, C. T., Murphy, M. R., Silanikove, N., & Maltz, E. (2002). Heat stress in lactating dairy cows: a review. *Livestock production science*, 77(1), 59-91. [https://doi.org/10.1016/S0301-6226\(01\)00330-X](https://doi.org/10.1016/S0301-6226(01)00330-X)
- Kamal, R., Dutt, T., Patel, M., Dey, A., Chandran, P. C., Bharti, P. K., & Barari, S. K. (2016). Behavioural, biochemical and hormonal responses of heat-stressed crossbred calves to different shade materials. *Journal of Applied Animal Research*, 44(1), 347-354. <https://doi.org/10.1080/09712119.2015.1074076>
- Kaufman, J. D. (2016). Effect of Varying Rumen Degradable and Undegradable Protein on Milk Production and Nitrogen Efficiency in Lactating Dairy Cows under Summer Conditions. Master Thesis, University of Tennessee.
- Khodaei-Motlagh, M., Shahneh, A. Z., Masoumi, R., & Derensis, F. (2011). Alterations in reproductive hormones during heat

- stress in dairy cattle. *African Journal of Biotechnology*, 10(29), 5552-5558.
- Knapp, J. R., Laur, G. L., Vadas, P. A., Weiss, W. P., & Tricarico, J. M. (2014). Invited review: Enteric methane in dairy cattle production: Quantifying the opportunities and impact of reducing emissions. *Journal of Dairy Science*, 97(6), 3231-3261. <https://doi.org/10.3168/jds.2013-7234>
- Kolbe, T., Lassnig, C., Poelzl, A., Palme, R., Auer, K. E., & Rüllicke, T. (2022). Effect of Different Ambient Temperatures on Reproductive Outcome and Stress Level of Lactating Females in Two Mouse Strains. *Animals*, 12(16), 2141. <https://doi.org/10.3390/ani12162141>
- Kuczynski, T., Blanes-Vidal, V., Li, B., Gates, R. S., de Alencar Naas, I., Moura, D. J., Berckmans, D., & Banhazi, T. M. (2011). Impact of global climate change on the health, welfare and productivity of intensively housed livestock. *International Journal of Agricultural and Biological Engineering*, 4(2), 1-22.
- Kundu, S. S., Mani, V., & Sontake, U. (2013). Feeding strategies for cattle and buffalo under climate change scenario for sustaining productivity. In S. V. Singh, R. C. Upadhyay, S. Sirohi & A. K. Singh (Eds.), *Climate Resilient Livestock & Production System* (pp. 126-141) Haryana, India: National Dairy Research Institute.
- Lezama-García, K., Mota-Rojas, D., Pereira, A. M. F., Martínez-Burnes, J., Ghezzi, M., Domínguez, A., Gómez, J., de Mira Geraldo, A., Lendez, P., Hernández-Ávalos, I., Falcón, I., Olmos-Hernández, A., & Wang, D. (2022). Transient receptor potential (TRP) and thermoregulation in animals: Structural biology and neurophysiological aspects. *Animals*, 12(1), 106. <https://doi.org/10.3390/ani12010106>
- Lipper, L., Thornton, P., Campbell, B. M., Baedeker, T., Braimoh, A., Bwalya, M., Caron, P., Cattaneo, A., Garrity, D., Henry, K., Hottle, R., Jackson, L., Jarvis, A., Kossam, F., Mann, W., McCarthy, N., Meybeck, A., Neufeldt, H., Remington, T.,... Torquebiau, E. F. (2014). Climate-smart agriculture for food security. *Nature Climate Change*, 4(12), 1068-1072. <https://doi.org/10.1038/nclimate2437>
- Littlejohn, M. D., Tiplady, K., Fink, T. A., Lehnert, K., Lopdell, T., Johnson, T., Couldrey, C., Keehan, M., Sherlock, R. G., Harland, C., Scott, A., Snell, R. G., Davis, S. R., & Spelman, R. J. (2016). Sequence-based association analysis reveals an MGST1 eQTL with pleiotropic effects on bovine milk composition. *Scientific Reports*, 6(1), 25376. <https://doi.org/10.1038/srep25376>
- Liu, S., Yue, T., Ahmad, M. J., Hu, X., Zhang, X., Deng, T., Hu, Y., He, C., Zhou, Y., & Yang, L. (2020). Transcriptome analysis reveals potential regulatory genes related to heat tolerance in holstein dairy cattle. *Genes*, 11(1), 68. <https://doi.org/10.3390/genes11010068>
- Luo, H., Li, X., Hu, L., Xu, W., Chu, Q., Liu, A., Guo, G., Liu, L., Brito, L. F., & Wang, Y. (2021). Genomic analyses and biological validation of candidate genes for rectal temperature as an indicator of heat stress in Holstein cattle. *Journal of Dairy Science*, 104(4), 4441-4451. <https://doi.org/10.3168/jds.2020-18725>
- Macciotta, N. P. P., Biffani, S., Bernabucci, U., Lacetera, N., Vitali, A., Ajmone-Marsan, P., & Nardone, A. (2017). Derivation and genome-wide association study of a principal component-based measure of heat tolerance in dairy cattle. *Journal of Dairy Science*, 100(6), 4683-4697. <https://doi.org/10.3168/jds.2016-12249>
- Mader, T. L., Gaughan, J. B., Johnson, L. J., & Hahn, G. L. (2010). Tympanic temperature in confined beef cattle exposed to excessive heat load. *International Journal of Biometeorology*, 54, 629-635. <https://doi.org/10.1007/s00484-009-0229-0>
- Madhusoodan, A. P., Sejian, V., Rashamol, V. P., Savitha, S. T., Bagath, M., Krishnan, G., & Bhatta, R. (2019). Resilient capacity of cattle to environmental challenges—An updated review. *Journal of Animal Behaviour and Biometeorology*, 7(3), 104-118. <https://doi.org/10.31893/2318-1265jabb.v7n3p104-118>
- McDowell, R. E., Hooven, N. W., & Camoens, J. K. (1976). Effect of climate on performance of Holsteins in first lactation. *Journal of Dairy Science*, 59(5), 965-971. [https://doi.org/10.3168/jds.S0022-0302\(76\)84305-6](https://doi.org/10.3168/jds.S0022-0302(76)84305-6)
- Meneses, J. A. M., de Sá, O. A. A. L., Coelho, C. F., Pereira, R. N., Batista, E. D., Ladeira, M. M., Casagrande, D. R., & Gionbelli, M. P. (2021). Effect of heat stress on ingestive, digestive, ruminal and physiological parameters of Nellore cattle feeding low-or high-energy diets. *Livestock Science*, 252, 104676. <https://doi.org/10.1016/j.livsci.2021.104676>
- Michael, P., de Cruz, C. R., Nor, N. M., Jamli, S., & Goh, Y. M. (2022). The Potential of Using Temperate-Tropical Crossbreds and Agricultural by-Products, Associated with Heat Stress Management for Dairy Production in the Tropics: A Review. *Animals*, 12(1), 1. <https://doi.org/10.3390/ani12010001>
- Min, L., Li, D., Tong, X., Nan, X., Ding, D., Xu, B., & Wang, G. (2019). Nutritional strategies for alleviating the detrimental effects of heat stress in dairy cows: a review. *International Journal of Biometeorology*, 63, 1283-1302. <https://doi.org/10.1007/s00484-019-01744-8>
- Min, S.-K., Simonis, D., & Hense, A. (2007). Probabilistic climate change predictions applying Bayesian model averaging. *Philosophical Transactions of the Royal Society A: Mathematical, Physical and Engineering Sciences*, 365(1857), 2103-2116. <https://doi.org/10.1098/rsta.2007.2070>
- Moran, J. (2005). *Tropical dairy farming: feeding management for small holder dairy farmers in the humid tropics*. Clayton, Australia: CSIRO publishing.
- Mordak, R., & Stewart, P. A. (2015). Periparturient stress and immune suppression as a potential cause of retained placenta in highly productive dairy cows: examples of prevention. *Acta Veterinaria Scandinavica*, 57, 84. <https://doi.org/10.1186/s13028-015-0175-2>
- Mota-Rojas, D., Titto, C. G., Orihuela, A., Martínez-Burnes, J., Gómez-Prado, J., Torres-Bernal, F., Flores-Padilla, K., Carvajal-de la Fuente, C., & Wang, D. (2021). Physiological and behavioral mechanisms of thermoregulation in mammals. *Animals*, 11(6), 1733. <https://doi.org/10.3390/ani11061733>
- Nabenishi, H., Ohta, H., Nishimoto, T., Morita, T., Ashizawa, K., & Tsuzuki, Y. (2012). The effects of cysteine addition during in vitro maturation on the developmental competence, ROS, GSH and apoptosis level of bovine oocytes exposed to heat stress. *Zygote*, 20(3), 249-259. <https://doi.org/10.1017/S0967199411000220>
- Nardone, A., Ronchi, B., Lacetera, N., & Bernabucci, U. (2006). Climatic effects on productive traits in livestock. *Veterinary Research Communications*, 30, 75-81. <https://doi.org/10.1007/s11259-006-0016-x>
- Nardone, A., Ronchi, B., Lacetera, N., Ranieri, M. S., & Bernabucci, U. (2010). Effects of climate changes on animal production and sustainability of livestock systems. *Livestock Science*, 130(1-3), 57-69. <https://doi.org/10.1016/j.livsci.2010.02.011>
- Nguyen, T. T. T., Bowman, P. J., Haile-Mariam, M., Pryce, J. E., & Hayes, B. J. (2016). Genomic selection for tolerance to heat



- stress in Australian dairy cattle. *Journal of Dairy Science*, 99(4), 2849-2862. <https://doi.org/10.3168/jds.2015-9685>
- Nienaber, J. A., & Hahn, G. L. (2007). Livestock production system management responses to thermal challenges. *International Journal of Biometeorology*, 52, 149-157. <https://doi.org/10.1007/s00484-007-0103-x>
- Olson, T. A., Lucena, C., Chase Jr, C. C., & Hammond, A. C. (2003). Evidence of a major gene influencing hair length and heat tolerance in *Bos taurus* cattle. *Journal of Animal Science*, 81(1), 80-90. <https://doi.org/10.2527/2003.81180x>
- Orief, Y. I., Karkor, T. A. E., Saleh, H. A., El Hadidy, A. S., & Badr, N. (2014). Comparative evaluation of vascular endothelial growth factor-A expression in pre-ovulatory follicular fluid in normogonadotrophic and endometriotic patients undergoing assisted reproductive techniques. *Middle East Fertility Society Journal*, 19(4), 248-261. <https://doi.org/10.1016/j.mefs.2013.06.002>
- Osei-Amponsah, R., Chauhan, S. S., Leury, B. J., Cheng, L., Cullen, B., Clarke, I. J., & Dunshea, F. R. (2019). Genetic selection for thermotolerance in ruminants. *Animals*, 9(11), 948. <https://doi.org/10.3390/ani9110948>
- Panda, S., Panda, N., Panigrahy, K. K., Gupta, S. K., Mishra, S. P., & Laishram, M. (2017). Role of niacin supplementation in dairy cattle: A review. *Asian Journal of Dairy and Food Research*, 36(2), 93-99. <https://doi.org/10.18805/ajdfr.v36i02.7949>
- Patra, A. K., & Kar, I. (2021). Heat stress on microbiota composition, barrier integrity, and nutrient transport in gut, production performance, and its amelioration in farm animals. *Journal of Animal Science and Technology*, 63(2), 211-247. <https://doi.org/10.5187/jast.2021.e48>
- Polsky, L. B., Madureira, A. M. L., Filho, E. L. D., Soriano, S., Sica, A. F., Vasconcelos, J. L. M., & Cerri, R. L. A. (2017). Association between ambient temperature and humidity, vaginal temperature, and automatic activity monitoring on induced estrus in lactating cows. *Journal of Dairy Science*, 100(10), 8590-8601. <https://doi.org/10.3168/jds.2017-12656>
- Polsky, L., & von Keyserlingk, M. A. G. (2017). Invited review: Effects of heat stress on dairy cattle welfare. *Journal of Dairy Science*, 100(11), 8645-8657. <https://doi.org/10.3168/jds.2017-12651>
- Ravagnolo, O., Misztal, I., & Hoogenboom, G. (2000). Genetic component of heat stress in dairy cattle, development of heat index function. *Journal of Dairy Science*, 83(9), 2120-2125. [https://doi.org/10.3168/jds.s0022-0302\(00\)75094-6](https://doi.org/10.3168/jds.s0022-0302(00)75094-6)
- Rejeb, M., Sadraoui, R., Najar, T., & M'rad, M. B. (2016). A complex interrelationship between rectal temperature and dairy cows' performance under heat stress conditions. *Open Journal of Animal Sciences*, 6(1), 24-30. <https://doi.org/10.4236/ojas.2016.61004>
- Rhoads, M. L., Rhoads, R. P., VanBaale, M. J., Collier, R. J., Sanders, S. R., Weber, W. J., Crooker, B. A., & Baumgard, L. H. (2009). Effects of heat stress and plane of nutrition on lactating Holstein cows: I. Production, metabolism, and aspects of circulating somatotropin. *Journal of Dairy Science*, 92(5), 1986-1997. <https://doi.org/10.3168/jds.2008-1641>
- Rhoads, R. P., Baumgard, L. H., Suagee, J. K., & Sanders, S. R. (2013). Nutritional interventions to alleviate the negative consequences of heat stress. *Advances in Nutrition*, 4(3), 267-276. <https://doi.org/10.3945/an.112.003376>
- Roth, Z. (2008). Heat stress, the follicle, and its enclosed oocyte: mechanisms and potential strategies to improve fertility in dairy cows. *Reproduction in Domestic Animals*, 43(S2), 238-244. <https://doi.org/10.1111/j.1439-0531.2008.01168.x>
- Roushdy, E. M., Zagloul, A. W., & El-Tarabany, M. S. (2018). Effects of chronic thermal stress on growth performance, carcass traits, antioxidant indices and the expression of HSP70, growth hormone and superoxide dismutase genes in two broiler strains. *Journal of Thermal Biology*, 74, 337-343. <https://doi.org/10.1016/j.jtherbio.2018.04.009>
- Sammad, A., Umer, S., Shi, R., Zhu, H., Zhao, X., & Wang, Y. (2020a). Dairy cow reproduction under the influence of heat stress. *Journal of Animal Physiology and Animal Nutrition*, 104(4), 978-986. <https://doi.org/10.1111/jpn.13257>
- Sammad, A., Wang, Y. J., Umer, S., Lirong, H., Khan, I., Khan, A., Ahmad, B., & Wang, Y. (2020b). Nutritional physiology and biochemistry of dairy cattle under the influence of heat stress: Consequences and opportunities. *Animals*, 10(5), 793. <https://doi.org/10.3390/ani10050793>
- Schoenberg, K. M., & Overton, T. R. (2011). Effects of plane of nutrition and 2, 4-thiazolidinedione on insulin responses and adipose tissue gene expression in dairy cattle during late gestation. *Journal of Dairy Science*, 94(12), 6021-6035. <https://doi.org/10.3168/jds.2011-4533>
- Sejian, V., Bhatta, R., Gaughan, J. B., Dunshea, F. R., & Lacetera, N. (2018). Adaptation of animals to heat stress. *Animal*, 12(S2), s431-s444. <https://doi.org/10.1017/S1751731118001945>
- Settivari, R. S., Spain, J. N., Ellersieck, M. R., Byatt, J. C., Collier, R. J., & Spiers, D. E. (2007). Relationship of thermal status to productivity in heat-stressed dairy cows given recombinant bovine somatotropin. *Journal of Dairy Science*, 90(3), 1265-1280. [https://doi.org/10.3168/jds.S0022-0302\(07\)71615-6](https://doi.org/10.3168/jds.S0022-0302(07)71615-6)
- Shu, H., Wang, W., Guo, L., & Bindelle, J. (2021). Recent advances on early detection of heat strain in dairy cows using animal-based indicators: a review. *Animals*, 11(4), 980. <https://doi.org/10.3390/ani11040980>
- Shwartz, G., Rhoads, M. L., VanBaale, M. J., Rhoads, R. P., & Baumgard, L. H. (2009). Effects of a supplemental yeast culture on heat-stressed lactating Holstein cows. *Journal of Dairy Science*, 92(3), 935-942. <https://doi.org/10.3168/jds.2008-1496>
- Sigdel, A., Abdollahi-Arpanahi, R., Aguilar, I., & Peñagaricano, F. (2019). Whole genome mapping reveals novel genes and pathways involved in milk production under heat stress in US Holstein cows. *Frontiers in Genetics*, 10, 928. <https://doi.org/10.3389/fgene.2019.00928>
- Silanikove, N. (2000). Effects of heat stress on the welfare of extensively managed domestic ruminants. *Livestock Production Science*, 67(1-2), 1-18. [https://doi.org/10.1016/S0301-6226\(00\)00162-7](https://doi.org/10.1016/S0301-6226(00)00162-7)
- Smith, E. K., O'Neill, J., Gerson, A. R., & Wolf, B. O. (2015). Avian thermoregulation in the heat: resting metabolism, evaporative cooling and heat tolerance in Sonoran Desert doves and quail. *Journal of Experimental Biology*, 218(22), 3636-3646. <https://doi.org/10.1242/jeb.128645>
- Soetan, K. O., Olaiya, C. O., & Oyewole, O. E. (2010). The importance of mineral elements for humans, domestic animals and plants: A review. *African Journal of Food Science*, 4(5), 200-222.
- Sordillo, L. M. (2016). Nutritional strategies to optimize dairy cattle immunity. *Journal of Dairy Science*, 99(6), 4967-4982. <https://doi.org/10.3168/jds.2015-10354>
- St-Pierre, N. R., Cobanov, B., & Schnitkey, G. (2003). Economic losses from heat stress by US livestock industries. *Journal of Dairy Science*, 86, E52-E77. [https://doi.org/10.3168/jds.S0022-0302\(03\)74040-5](https://doi.org/10.3168/jds.S0022-0302(03)74040-5)
- Taniguchi, Y., Ooie, T., Takahashi, N., Shinohara, T., Nakagawa, M.,

- Yonemochi, H., Hara, M., Yoshimatsu, H., & Saikawa, T. (2006). Pioglitazone but not glibenclamide improves cardiac expression of heat shock protein 72 and tolerance against ischemia/reperfusion injury in the heredity insulin-resistant rat. *Diabetes*, 55(8), 2371-2378. <https://doi.org/10.2337/db06-0268>
- Tao, S., & Dahl, G. E. (2013). Invited review: Heat stress effects during late gestation on dry cows and their calves. *Journal of Dairy Science*, 96(7), 4079-4093. <https://doi.org/10.3168/jds.2012-6278>
- Temesgen, M. Y., Assen, A. A., Gizaw, T. T., Minalu, B. A., & Mersha, A. Y. (2022). Factors affecting calving to conception interval (days open) in dairy cows located at Dessie and Kombolcha towns, Ethiopia. *PLoS One*, 17(2), e0264029. <https://doi.org/10.1371/journal.pone.0264029>
- Theusme, C., Avendaño-Reyes, L., Macías-Cruz, U., Castañeda-Bustos, V., García-Cueto, R., Vicente-Pérez, R., Mellado, M., Meza-Herrera, C., & Vargas-Villamil, L. (2022). Prediction of rectal temperature in Holstein heifers using infrared thermography, respiration frequency, and climatic variables. *International Journal of Biometeorology*, 66, 2489-2500. <https://doi.org/10.1007/s00484-022-02377-0>
- Tucker, C., & Schütz, K. (2009). *Behavioral responses to heat stress: dairy cows tell the story*. Western Dairy Nutrition Conference, Tepme, AZ.
- Van Soest, P. J. (2018). *Nutritional ecology of the ruminant*. New York, US: Cornell University Press.
- Vitali, A., Segnalini, M., Bertocchi, L., Bernabucci, U., Nardone, A., & Lacetera, N. (2009). Seasonal pattern of mortality and relationships between mortality and temperature-humidity index in dairy cows. *Journal of Dairy Science*, 92(8), 3781-3790. <https://doi.org/10.3168/jds.2009-2127>
- Wang, B., Wang, C., Guan, R., Shi, K., Wei, Z., Liu, J., & Liu, H. (2019). Effects of dietary rumen-protected betaine supplementation on performance of postpartum dairy cows and immunity of newborn calves. *Animals*, 9(4), 167. <https://doi.org/10.3390/ani9040167>
- Wankar, A. K., Rindhe, S. N., & Doijad, N. S. (2021). Heat stress in dairy animals and current milk production trends, economics, and future perspectives: the global scenario. *Tropical Animal Health and Production*, 53, 70. <https://doi.org/10.1007/s11250-020-02541-x>
- Wathes, D. C., Fenwick, M., Cheng, Z., Bourne, N., Llewellyn, S., Morris, D. G., Kenny, D., Murphy, J., & Fitzpatrick, R. (2007). Influence of negative energy balance on cyclicity and fertility in the high producing dairy cow. *Theriogenology*, 68(S1), S232-S241. <https://doi.org/10.1016/j.theriogenology.2007.04.006>
- Wilhelm-Olany, A. R. (2019). *Effects of Oral Supplementation of Potassium Chloride in Hypokalemic Dairy Cows by Use of a Bolus Formulation on Metabolism, Abomasal Position and Vaginal Discharge Characteristics*. Doctoral dissertation, Free University of Berlin.
- Woodroffe, R., Groom, R., & McNutt, J. W. (2017). Hot dogs: High ambient temperatures impact reproductive success in a tropical carnivore. *Journal of Animal Ecology*, 86(6), 1329-1338. <https://doi.org/10.1111/1365-2656.12719>
- Wu, G. (2020). Management of metabolic disorders (including metabolic diseases) in ruminant and nonruminant animals. In *Animal Agriculture* (pp. 471-491). Massachusetts, United States: Academic Press. <https://doi.org/10.1016/B978-0-12-817052-6.00027-6>
- Yadav, B., Singh, G., Verma, A. K., Dutta, N., & Sejian, V. (2013). Impact of heat stress on rumen functions. *Veterinary World*, 6(12), 992-996. <https://doi.org/10.14202/vetworld.2013.992-996>
- Zamorano-Algandar, R., Sánchez-Castro, M. A., Hernández-Cordero, A. I., Enns, R. M., Speidel, S. E., Thomas, M. G., Medrano, J. F., Rincón, K., Leyva-Corona, J. C., Luna-Nevárez, G., Reyna-Granados, J. R., & Luna-Nevárez, P. (2021). Molecular marker prediction for days open and pregnancy rate in Holstein cows managed in a warm climate. *Livestock Science*, 250, 104536. <https://doi.org/10.1016/j.livsci.2021.104536>
- Zeng, L., Chen, N., Ning, Q., Yao, Y., Chen, H., Dang, R., & Lei, C. (2018). PRLH and SOD 1 gene variations associated with heat tolerance in Chinese cattle. *Animal Genetics*, 49(5), 447-451. <https://doi.org/10.1111/age.12702>
- Zigo, F., Vasil, M., Ondrašovičová, S., Výrostková, J., Bujok, J., & Pecka-Kielb, E. (2021). Maintaining optimal mammary gland health and prevention of mastitis. *Frontiers in Veterinary Science*, 8, 607311. <https://doi.org/10.3389/fvets.2021.607311>