

# Seasonal variations in phytoplankton abundance of Ambona lake Maharashtra

V. V. Bhoyar and H. L. Tamloorkar

P.G. Dept. of Zoology, Yeshwant Mahavidyalaya, Nanded 431602, India

## Abstract

Present investigation deals with the quantitative and qualitative information on seasonal variations of phytoplanktons on Ambona Lake in Umarkhed Taluka Yavatmal district. Phytoplankton's play an important role as food for herbivorous animals (primary production) and acts as biological indicators of water quality in pollution studies. Hence the present study was carried out on Ambona lake for a period of one year from Jun 2010 to May 2011. The samples were collected and identified using standard keys of APHA [1]. Altogether twenty one species of phytoplankton's belonged to four class were identified. Out of the 11 species belonged to chlorophyceae, and 5 species belonged to Bacillariophyceae, 4 species belonged to cyanophyceae, and 1 species belonged to Euglenophyceae.

**Keywords:** phytoplankton, Ambona Lake, water quality, seasonal variations.

## INTRODUCTION

Algae contribute a part of the food chain in the aquatic environment and any change in its growth and composition will alter the other living sources including the fishes [10]. phytoplankton responds immediately to the surrounding changes and hence it indicates the water quality. Aquatic environment supporting hydrophytic vegetation is endowed with luxurious growth of algae. Considerable work has been carried out in India about systematic survey, distribution, periodicity and ecology of algae in several habitats [8,9]. Phytoplankton being the primary producers forms the lowest trophic level in the food chain of freshwater ecosystem, moreover, number and species of phytoplankton's serves to determine the quality of water body [2].

The present study was conducted in Ambona Lake for period of a year from Jun 2010 to May 2011. The samples were collected from four sampling stations of the lakes.

## MATERIALS AND METHODS

The samples were collected from four sampling stations of the lakes. The present study was conducted in Ambona lake for period of one year i.e. from Jun 2010 to May 2011. The water samples for phytoplankton population 10L of water was filtered through plankton net made up of bolting silk cloth [15]. Filtered samples were fixed and preserved by adding lugol's iodine solution. For counting planktons a Sedgwick Rafter Plankton Counting Cell was used. The population data was expressed as no / ml.

## Phytoplanktons

### Chlorophyceae

Closterium sp.  
Closterium sp.  
Spirogyra Sp.  
Oedogonium Sp.  
Ulothrix Sp.  
Zygnema Sp.  
Chara Sp.  
Nitrela Sp.  
Pediastrum Sp.  
Hydrodictyon Sp.  
Chlorella Sp.

### Bacillariophyceae

Diatom Sp.  
Navicula Sp.  
Pinnularia Sp.  
Tabellaria Sp.  
Nitzschia Sp.  
Gyrosigma Sp.

### Cyanophyceae

Anabaena Sp.  
Nostoc Sp.  
Microcystis Sp.  
Oscillatoria Sp.

### Euglenophyceae

Euglena-phacus sp

## RESULTS AND DISCUSSIONS

Algae productivity in the month of March, April was the highest resulting from sufficient nutrient enrichment of water and adequate solar radiations. Water transparency was high during summer season was characterized by absence of flow velocity, flood, surface run-off suspended particals, which gave rise to high transparency, increased food abundance and high photosynthetic activity. Most of workers studied the

Received: March 12, 2012; Revised: April 10, 2012; Accepted: May 15, 2012.

\*Corresponding Author

V. V. Bhoyar

P.G. Dept. of Zoology, Yeshwant Mahavidyalaya, Nanded 431602, India

Tel: +91-9673383277

Email: [patilvidya81@gmail.com](mailto:patilvidya81@gmail.com)

periodicity and distribution of algae in Indian lotic bodies. Some workers have suggested that total population of algae reached their high density during winter [4,11] on the other hand others showed the maximum total algae during postmonsoon, winter and early summer and monsoon [7,17]

Altogether 21 species or phytoplankton belonged to class chlorophyceae, Bacillariophyceae, cyanophyceae and Euglenophyceae were identified. Out of the 11 species belonged to chlorophyceae, and 5 species belonged to Bacillariophyceae, 4 species belonged to cyanophyceae, and 1 species belonged to Euglenophyceae. Among chlorophyceae numerical superiority was found in case of *Spirogyra maxima*, and *Closterium*. Among the Bacillariophyceae *Navicula* and *Diatoms* abundant, *Microcystis* repeated abundance among cyanophyceae. *Euglena* was the only species of Euglenophyceae observed in Ambona Lake. High density of phytoplankton species diversity during the study period except the rainy season (June, July, August). This may be due to cloudy weather, low transparency & heavy flood caused decline of phytoplankton density. The chlorophyceae population was abundant during the summer months (March, April, and May). These results are consistent with Devika [6] also recorded high population during summer & suggested that this might be due to physical rather than chemical conditions in which the water temperature and transparency had a direct relationship with phytoplankton population.

Ven Den Hoeck [16] reported that higher chlorophyceae are a large and important group of freshwater algae. Pulle and Khan [12] studied on seasonal variation in primary production in Isapur Dam Maharashtra. The Bacillariophyceae represented the second most dominant group in phytoplankton population. The minimum density of Bacillariophyceae was recorded in the month of July while the maximum density was recorded in the month of January.

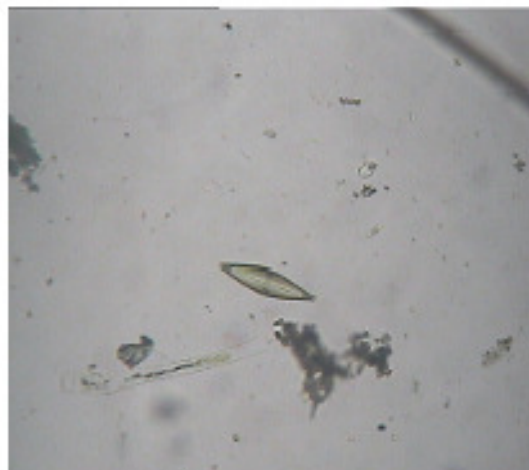
Among cyanophyceae, total 6 genera were identified throughout the study period, such as *Anabaena* sp, *Nostoc* sp, *Oscillatoria* sp and *Microcystis* sp the minimum density of Cyanophyceae was recorded in the month of June while the maximum density was recorded in the month of March throughout the study period. The maximum density of Euglenophyceae was recorded in the month of June while the maximum density was recorded in the month of October.

The high rate productivity during summer months was due to increase in temperature and high transparency. Such parameters speed up the photosynthetic activity of phytoplankton. Ambona Lake phytoplankton also shows a high density of Chlorophyceae members dominated by *Spirogyra* sp. *Pediastrum* sp. and *Euglena* sp. which is an indication of organic pollution. These findings are in agreement with those of Chaturvedi [5].

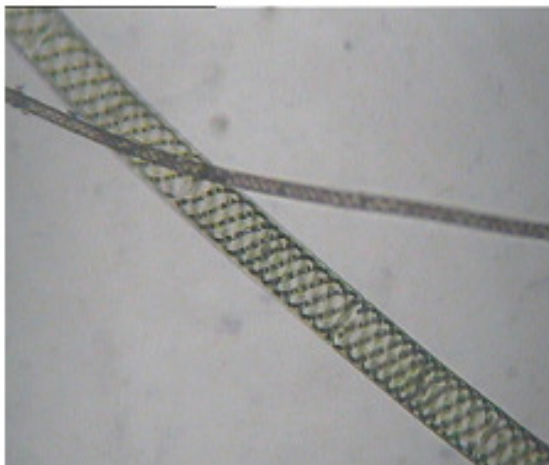
The selected species of phytoplankton's were show in following photograph.



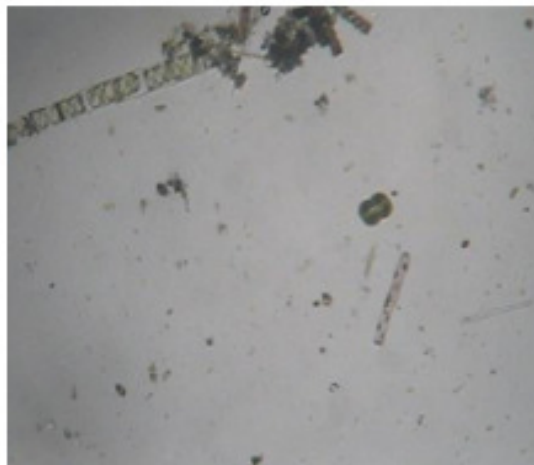
*Closterium* sp.



*Navicula* sp.

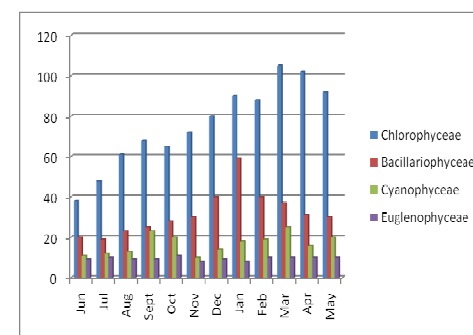
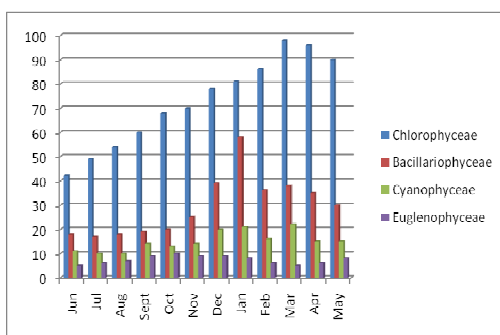
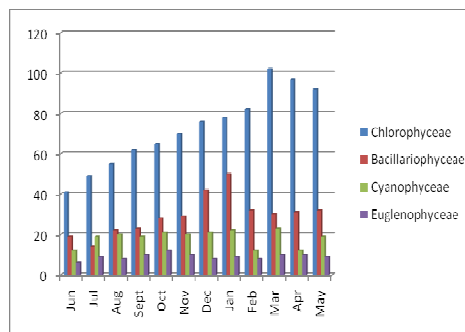
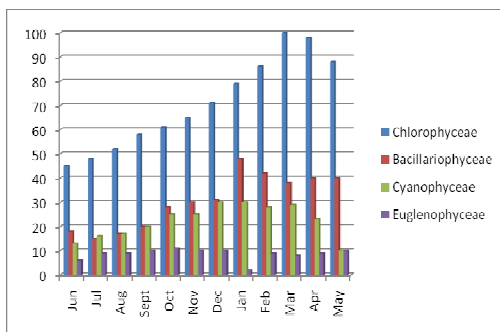


*Spirogyra* Sp.



*Cosmarium* Sp.

## Monthly variation of Phytoplankton /mL during 20010-11



## REFERENCES

- [1] APHA. 1998. Standard methods for the examination of water and waste water (20th edition). American Public Health Association. 1998. 10-161 pp.
- [2] Bahura, C. K. 2001. Phytoplankton community of highly eutrophic temple tank, Bikaner Rajasthan *J. Aqua Biol.* 16 (1 & 2): Pg. 1 -4.
- [3] Bajpai, A. K. and M. S. Agarkar. 1997. Lower Plants at high altitudes I. some plankton from Auti Skiing field. *Ecol. Environ. Conserve.* 3, Pg. 97 – 100.
- [4] Chakraborty, R.D., Ray P. and Singh, S. B. 1959. A quantitative study of the plankton and the physico – chemical conditions of the river Jamuna at Allahabad in 1954 – 55, *Indian J. fish.* 6 (1), Pg186-203.
- [5] Chaturvedi, R. K., Sharma K. P., Sharma K., Bharadwaj S., and Sharma S. 1999. Plankton community of polluted water around Sanganer, Jaipur. *Journal of Environment and Pollution*, 6, (1), p 77-84.
- [6] Devika, R., A. Rajendran and P. Selvapathy, 2006. Variation studies on the physico-chemical and biological characteristics at different depths in model waste stabilisation tank, *Pollut. Res.*, 24, 771 – 774.
- [7] Lakshminarayan, J. S. 1965. Studies on the phytoplankton of the river Ganges, Varanasi, India, Parts I - IV, *Hydrobiologia*, 25 (1 & 2): 119 – 175.
- [8] Mohan, N. and Kaliyar R. P. 1989. Influence of tannery effluent on Anabaena. *Advances in Applied Phycology* 2:213-217.
- [9] Mohan, N., Singh S. K., Hasan N., Dubey S. M. and Singh R. 2003. Effect of distillery effluent on growth of cyanobacteria *Oscillatoria tenuis*. 73<sup>rd</sup> Session of *National Academy of Science Abstracts* 8:38-39.
- [10] Palmer. 1980. *Algae and Water pollution* Castle House Publication Limited, England, Pg. 123.
- [11] Philipose, M.T. 1960. Freshwater phytoplankton of inland fisheries, Proc. Symp. Algology, ICAR, New Delhi, Pg. 272 – 291.
- [12] Pule, J. S. and A.M. Khan 2001. Seasonal variations in primary production in Isapur Dam, Maharashtra *J. Aqua. Biol.*, 16(2), Pg. 19 -23.
- [13] Roy, H. K. 1955. Plankton Ecology of the River Hoogly at Pota, V. Bengal, *Ecology*, 36 (2): 169 – 175.
- [14] Singh, S. P. and T. R. Nayak 1990. Phytoplankton and certain physico-chemical conditions in fresh water lake, Matyatal, Puna, *National seminar on Recent advances in Hydrobiology*. Pg. 118.
- [15] Trivedi, R. K. and P. K. Goel 1986. Chemical and Biological methods for water pollution studies Pg. 209, Enviromedia publications Karad.
- [16] Ven Den Hoeck C., D.G. Mann and H. M. Jahns. 1995. *Algae: An introduction to phycology* Cambridge University Press, Cambridge.
- [17] Venkateswarlu, V. 1969. An Ecological study of the River moosi, Hyderabad with special Reference to water pollution factors including Distribution of Algae, *Hydrobiologia*, 33 (3 – 4) : 352 – 363.