

A new record *Tylocephalum trygoni* n.sp. (Cestoda - leacanicephalidae) from *trygonzuegiat panji*, Goa, India

D.D.Khamkar

Department of Zoology, Arts, Commerce and Science College, Badnapur, Dist. Jalna (M.S.), India.

Abstract

The present communication deals with description of new species of genus *Tylocephalum trygoni* n.sp. in having testes number 35-40 (38) comes closer to *T. yorkei*, *T. elongatum*, *T. minutum* & *I. Bombayensis*, however it differs from them in shape and size of scolex, presence or absence of accessory suckers, number of testes, shape and position of ovary, shape and position of vitellaria.

Keywords: *Tylocephalum trygoni* n.sp., spiral valve., *Trygon zuegi*, Goa.

INTRODUCTION

The genus *Tylocephalum* is erected by Linton 1890 [1], with its type species *Tylocephalum pingue* from *Rjomptera quadriloba*, woods hole and also recorded from *Rhynoptera bonassus*. Later on 10 species are added to this genus by various workers in the world. The present form deals with description of a new species as *Tylocaphalum trygoni* n.sp.

MATERIAL AND METHODS

Eleven cestodes collected from *Trygon Zuegi*. All were flattened, preserved in 4% formalin, whole mount slides were prepared for anatomical studies. Drawings were made with the help of camera Lucida. All measurements were in millimeter.

DESCRIPTION

Scolex distinctly marked off from strobila, almost globular in shape, elongated, distinctly divided anterior, posterior region, 0.720 x 0.417-0.568; anterior region small, oval, transversely elongated, with thick muscle bonds, arranged in a fan shaped arrangement, 0.454 x 0.303 - 0.492; posterior region longer, oval, with thin musculature, with accessory suckers, 0.568 x 0.530-0.568; accessory suckers 4, in two pairs, on each side, slightly overlapping on each other, small, oval, in each pair, 0.068-0.083 x 0.045-0.076; neck medium, slightly narrow anteriorly, broad posteriorly, 0.917 -0.205 x 0.288-0.318; testes small, oval, anterior to cirrus pouch, 35-40 (38), in a single field, in three rows, evenly distributed, in central medulla, in anterior half of the segments, laterally bounded by longitudinal excretory canals, from the anterior margin of segments, to cirrus pouch, 0.023-0.030 x 0.023-0.038; cirrus pouch large, oval, obliquely placed, posterior to middle of segments, opens submarginally, 0.250 x

0.098-0.182; 0.250 x 0.098-0.182; cirrus thin, curved, contained within cirrus pouch, 0.205 x 0.015-0.023; vas deferens long, extends anterior to cirrus pouch, slightly coiled, 0.394 x 0.015-0.023; ovary, large, a single mass, near posterior margin of the segments, 0.379 x 0.159-0.189; ovarian acini 18-20 in number; vagina thin tube, anteroventral to cirrus pouch, starts from genital pore, extends anteriorly, takes a posterior turn, runs posteriorly, taking or 2-3 turns, runs towards the middle of the segments, reaches and opens into ootype, 1.175 x 0.015-0.023; ootype, large, globular, postero-ventral to ovary, with 7-8 short, blunt, round acini, 0.076-0.106 x 0.091-0.121; genital pores medium, oval, obliquely placed, sub-marginal, irregularly alternate, 0.060 x 0.030-0.045; longitudinal excretory canals medium, straight, 0.015-0.023 in breadth and vitellaria granular, medium, strips, certicular and situated from anterior to posterior margin of the segments.

Type species - *Tylocephalum trygoni* n.sp..

Host - *Trygon Zegei*

Habitat - Spiral valve.

Locality - Panji, Goa State.

Date of collection- 10th Feb., 1991.

RESULTS AND DISCUSSION

The worm under discussion differs from *T. elongatum* in having scolex with anterior region as long as posterior, neck absent, testes 40, ovary bilobed, vitellaria follicular; it further differs from *I. minutum* in having scolex in anterior region smaller than posterior, neck absent, testes 33, ovary not mentioned, vitellaria follicular, in one row, it also differs from *I. bombayensis* in having scolex round, neck short, testes 31-38, ovary roughly bilobed, transverse band, cylindrical and vitellaria follicular and in two lateral fields and it differs from *T. yorkei* in having scolex cushion shaped, neck absent, testes 30-36, ovary small, bilobed vitellaria follicular and in one row on each side.

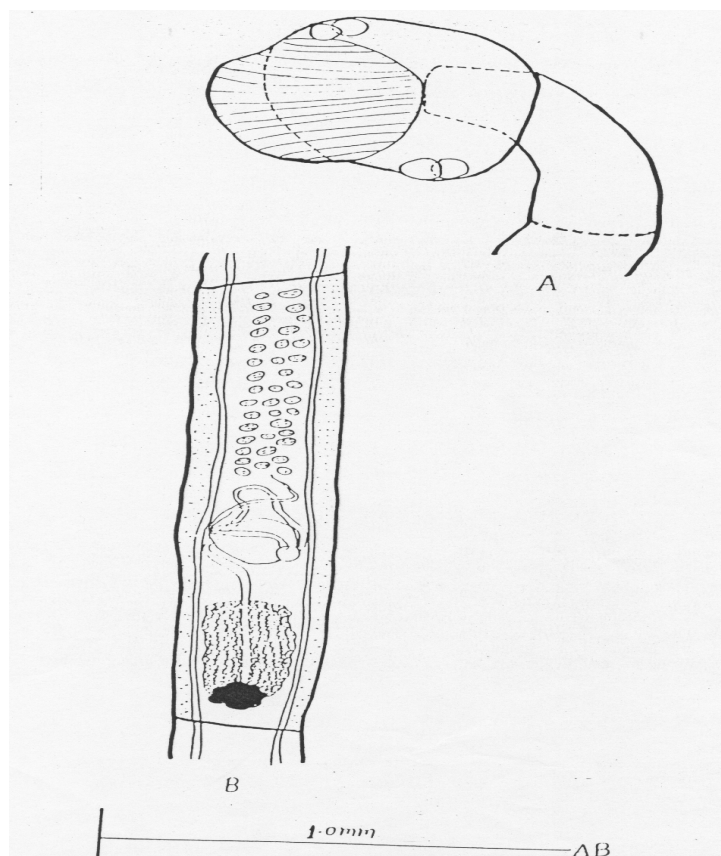
As the above noted characters are valid enough to erect a new species, to accommodate these worms, hence the name *Tylocephalum trygoni* n.sp. is proposed, after the generic name of host.

Received: Oct 02, 2011; Revised: Nov 03, 2011; Accepted: Dec 18, 2011.

*Corresponding Author

D.D.Khamkar
Department of Zoology, Arts, Commerce and Science College, Badnapur, Dist. Jalna (M.S.), India.

Email:



ACKNOWLEDGEMENT

Authors are grateful to Prof. & Head, Department of Zoology Dr. Babasaheb Ambedkar Marathwada University, Aurangabad (M.S.) for providing laboratory facilities.

REFERENCES

- [1] Linton, E. (1890). Notes on Entozoa of marine fishes of New England II. Ann. Rep. U.S. Comm. Fish and Fisheries for 1887, Washington 15, 719-899.